

APOL1 Antibody

Purified Rabbit Polyclonal Antibody (Pab)

Catalog # AP7361a

Product Information

Application	IHC-P, FC, WB, E
Primary Accession	O14791
Reactivity	Human
Host	Rabbit
Clonality	Polyclonal
Isotype	Rabbit IgG
Calculated MW	43974
Antigen Region	137-171

Additional Information

Gene ID	8542
Other Names	Apolipoprotein L1, Apolipoprotein L, Apo-L, ApoL, Apolipoprotein L-I, ApoL-I, APOL1, APOL
Target/Specificity	This APOL1 antibody is generated from rabbits immunized with a KLH conjugated synthetic peptide between 137-171 amino acids from human APOL1.
Dilution	IHC-P~~1:100~500 FC~~1:10~50 WB~~1:1000 E~~Use at an assay dependent concentration.
Format	Purified polyclonal antibody supplied in PBS with 0.09% (W/V) sodium azide. This antibody is prepared by Saturated Ammonium Sulfate (SAS) precipitation followed by dialysis against PBS.
Storage	Maintain refrigerated at 2-8°C for up to 2 weeks. For long term storage store at -20°C in small aliquots to prevent freeze-thaw cycles.
Precautions	APOL1 Antibody is for research use only and not for use in diagnostic or therapeutic procedures.

Protein Information

Name	APOL1
Synonyms	APOL
Function	May play a role in lipid exchange and transport throughout the body. May participate in reverse cholesterol transport from peripheral cells to the liver.

Cellular Location

Secreted.

Tissue Location

Plasma. Found on APOA-I-containing high density lipoprotein (HDL3).
Expressed in pancreas, lung, prostate, liver, placenta and spleen

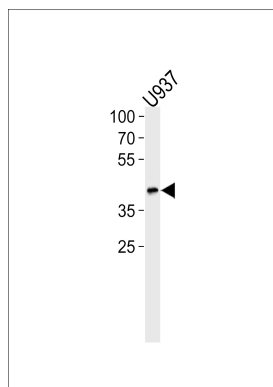
Background

APOL1 is a secreted high density lipoprotein which binds to apolipoprotein A-I. Apolipoprotein A-I is a relatively abundant plasma protein and is the major apoprotein of HDL. It is involved in the formation of most cholesteryl esters in plasma and also promotes efflux of cholesterol from cells. This apolipoprotein L family member may play a role in lipid exchange and transport throughout the body, as well as in reverse cholesterol transport from peripheral cells to the liver.

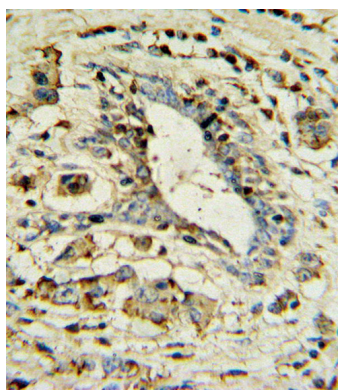
References

Li,Q., Clin. Chim. Acta 403 (1-2), 152-155 (2009)
Zhaorigetu,S., Autophagy 4 (8), 1079-1082 (2008)

Images

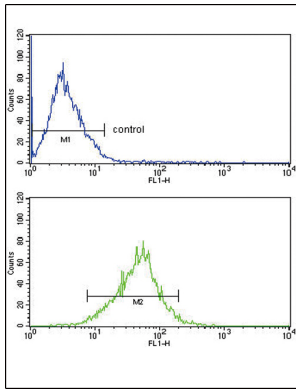


APOL1-BH3 Domain Antibody (Cat. #AP7361a) western blot analysis in U937 cell line lysates (35ug/lane). This demonstrates the APOL1-BH3 Domain antibody detected the APOL1-BH3 Domain protein (arrow).



APOL1 Antibody (Cat. #AP7361a) IHC analysis in formalin fixed and paraffin embedded human breast carcinoma followed by peroxidase conjugation of the secondary antibody and DAB staining. This data demonstrates the use of the APOL1 Antibody for immunohistochemistry. Clinical relevance has not been evaluated.

APOL1 Antibody (19169) FC analysis of MCF-7 cells (bottom histogram) compared to a negative control cell (top histogram). FITC-conjugated goat-anti-rabbit secondary antibodies were used for the analysis.



Please note: All products are 'FOR RESEARCH USE ONLY. NOT FOR USE IN DIAGNOSTIC OR THERAPEUTIC PROCEDURES'.