

CD85f Polyclonal Antibody

Catalog # AP73648

Product Information

Application	WB
Primary Accession	A6NI73
Reactivity	Human
Host	Rabbit
Clonality	Polyclonal
Calculated MW	32755

Additional Information

Gene ID	353514
Other Names	LILRA5; ILT11; LILRB7; LIR9; Leukocyte immunoglobulin-like receptor subfamily A member 5; CD85 antigen-like family member F; Immunoglobulin-like transcript 11; ILT-11; Leukocyte immunoglobulin-like receptor 9; LIR-9; CD85f
Dilution	WB~~Western Blot: 1/500 - 1/2000. ELISA: 1/20000. Not yet tested in other applications.
Format	Liquid in PBS containing 50% glycerol, 0.5% BSA and 0.09% (W/V) sodium azide.
Storage Conditions	-20°C

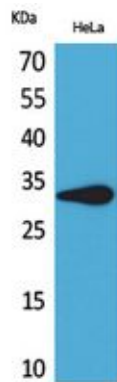
Protein Information

Name	LILRA5
Synonyms	ILT11, LILRB7, LIR9
Function	May play a role in triggering innate immune responses. Does not seem to play a role for any class I MHC antigen recognition.
Cellular Location	Cell membrane; Single-pass type I membrane protein
Tissue Location	Expressed mostly in tissues of the hematopoietic system, including bone marrow, spleen, lymph node and peripheral leukocytes. Among leukocytes, monocytes and neutrophils express the highest level. Expressed in CD14+ monocytes, but not in T-cells, B- cells or natural killer (NK) cells (at protein level)

Background

May play a role in triggering innate immune responses. Does not seem to play a role for any class I MHC antigen recognition.

Images



Western Blot analysis of HeLa cells using CD85f Polyclonal Antibody.. Secondary antibody was diluted at 1:20000

Please note: All products are 'FOR RESEARCH USE ONLY. NOT FOR USE IN DIAGNOSTIC OR THERAPEUTIC PROCEDURES'.