

Integrin β 4 Polyclonal Antibody

Catalog # AP73651

Product Information

| | |
|-------------------|------------------------|
| Application | WB |
| Primary Accession | P16144 |
| Reactivity | Human, Mouse, Rat |
| Host | Rabbit |
| Clonality | Polyclonal |
| Calculated MW | 202167 |

Additional Information

| | |
|--------------------|---|
| Gene ID | 3691 |
| Other Names | ITGB4; Integrin beta-4; GP150; CD104 |
| Dilution | WB--Western Blot: 1/500 - 1/2000. ELISA: 1/20000. Not yet tested in other applications. |
| Format | Liquid in PBS containing 50% glycerol, 0.5% BSA and 0.09% (W/V) sodium azide. |
| Storage Conditions | -20°C |

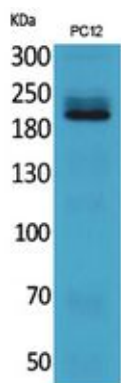
Protein Information

| | |
|-------------------|---|
| Name | ITGB4 |
| Function | Integrin alpha-6/beta-4 is a receptor for laminin. Plays a critical structural role in the hemidesmosome of epithelial cells. Is required for the regulation of keratinocyte polarity and motility. ITGA6:ITGB4 binds to NRG1 (via EGF domain) and this binding is essential for NRG1-ERBB signaling (PubMed: 20682778). ITGA6:ITGB4 binds to IGF1 and this binding is essential for IGF1 signaling (PubMed: 22351760). ITGA6:ITGB4 binds to IGF2 and this binding is essential for IGF2 signaling (PubMed: 28873464). |
| Cellular Location | Cell membrane; Single-pass type I membrane protein. Cell membrane; Lipid-anchor. Cell junction, hemidesmosome Note=Colocalizes with DST at the leading edge of migrating keratinocytes |
| Tissue Location | Integrin alpha-6/beta-4 is predominantly expressed by epithelia. Isoform beta-4D is also expressed in colon and placenta Isoform beta-4E is also expressed in epidermis, lung, duodenum, heart, spleen and stomach |

Background

Integrin alpha-6/beta-4 is a receptor for laminin. Plays a critical structural role in the hemidesmosome of epithelial cells. Is required for the regulation of keratinocyte polarity and motility. ITGA6:ITGB4 binds to NRG1 (via EGF domain) and this binding is essential for NRG1-ERBB signaling (PubMed:[20682778](#)). ITGA6:ITGB4 binds to IGF1 and this binding is essential for IGF1 signaling (PubMed:[22351760](#)). ITGA6:ITGB4 binds to IGF2 and this binding is essential for IGF2 signaling (PubMed:[28873464](#)).

Images



Western Blot analysis of PC12 cells using Integrin β 4 Polyclonal Antibody.. Secondary antibody was diluted at 1:20000

Please note: All products are 'FOR RESEARCH USE ONLY. NOT FOR USE IN DIAGNOSTIC OR THERAPEUTIC PROCEDURES'.