

CD110 Polyclonal Antibody

Catalog # AP73652

Product Information

Application	WB, IHC-P, IF, ICC, E
Primary Accession	P40238
Reactivity	Human, Mouse, Rat
Host	Rabbit
Clonality	Polyclonal
Calculated MW	71245

Additional Information

Gene ID	4352
Other Names	MPL; TPOR; Thrombopoietin receptor; TPO-R; Myeloproliferative leukemia protein; Proto-oncogene c-Mpl; CD110
Dilution	WB~~Western Blot: 1/500 - 1/2000. IHC-p: 1/100-1/300. ELISA: 1/20000. Not yet tested in other applications. IHC-P~~Western Blot: 1/500 - 1/2000. IHC-p: 1/100-1/300. ELISA: 1/20000. Not yet tested in other applications. IF~~1:50~200 ICC~~N/A E~~N/A
Format	Liquid in PBS containing 50% glycerol, 0.5% BSA and 0.09% (W/V) sodium azide.
Storage Conditions	-20°C

Protein Information

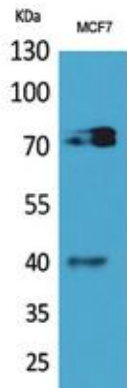
Name	MPL
Synonyms	TPOR
Function	Receptor for thrombopoietin that regulates hematopoietic stem cell renewal, megakaryocyte differentiation, and platelet formation. Upon activation by THPO, induces rapid tyrosine phosphorylation and activation of JAK2, providing docking sites for many signaling proteins such as STAT5, SHIP/INPP5D, GRB2, SOS1 and PI3K (PubMed: 15899890 , PubMed: 37633268). In turn, These signaling cascades lead to the proliferation, survival, and differentiation of megakaryocytes, ultimately leading to increased platelet production.
Cellular Location	Cell membrane; Single-pass type I membrane protein. Golgi apparatus Cell surface
Tissue Location	Expressed at a low level in a large number of cells of hematopoietic origin.

Isoform 1 and isoform 2 are always found to be coexpressed

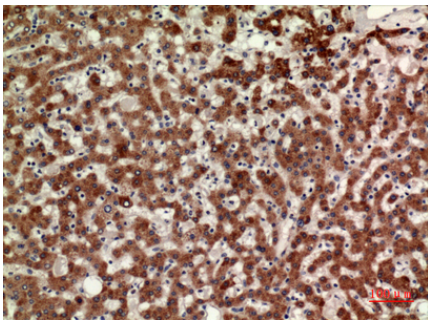
Background

Receptor for thrombopoietin that acts as a primary regulator of megakaryopoiesis and platelet production. May represent a regulatory molecule specific for TPO-R-dependent immune responses.

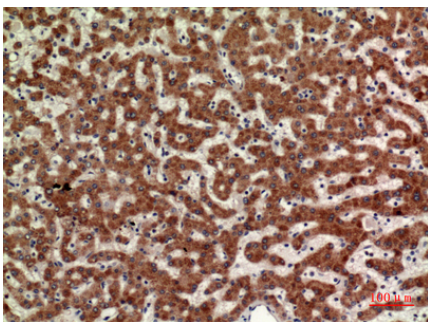
Images



Western Blot analysis of MCF7 cells using CD110 Polyclonal Antibody.. Secondary antibody was diluted at 1:20000



Immunohistochemical analysis of paraffin-embedded human-liver, antibody was diluted at 1:100



Immunohistochemical analysis of paraffin-embedded human-liver, antibody was diluted at 1:100

Please note: All products are 'FOR RESEARCH USE ONLY. NOT FOR USE IN DIAGNOSTIC OR THERAPEUTIC PROCEDURES'.