

CD223 Polyclonal Antibody

Catalog # AP73663

Product Information

| | |
|-------------------|------------------------|
| Application | WB |
| Primary Accession | P18627 |
| Reactivity | Human |
| Host | Rabbit |
| Clonality | Polyclonal |
| Calculated MW | 57449 |

Additional Information

| | |
|--------------------|---|
| Gene ID | 3902 |
| Other Names | LAG3; FDC; Lymphocyte activation gene 3 protein; LAG-3; Protein FDC; CD223 |
| Dilution | WB~~Western Blot: 1/500 - 1/2000. ELISA: 1/20000. Not yet tested in other applications. |
| Format | Liquid in PBS containing 50% glycerol, 0.5% BSA and 0.09% (W/V) sodium azide. |
| Storage Conditions | -20°C |

Protein Information

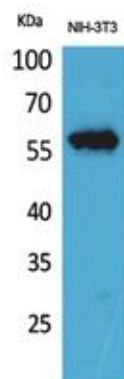
| | |
|----------|--|
| Name | LAG3 (HGNC:6476) |
| Synonyms | FDC |
| Function | <p>Lymphocyte activation gene 3 protein: Inhibitory receptor on antigen activated T-cells (PubMed:20421648, PubMed:7805750, PubMed:8647185). Delivers inhibitory signals upon binding to ligands, such as FGL1 (By similarity). FGL1 constitutes a major ligand of LAG3 and is responsible for LAG3 T-cell inhibitory function (By similarity). Following TCR engagement, LAG3 associates with CD3-TCR in the immunological synapse and directly inhibits T-cell activation (By similarity). May inhibit antigen-specific T-cell activation in synergy with PDCD1/PD-1, possibly by acting as a coreceptor for PDCD1/PD-1 (By similarity). Negatively regulates the proliferation, activation, effector function and homeostasis of both CD8(+) and CD4(+) T-cells (PubMed:20421648, PubMed:7805750, PubMed:8647185). Also mediates immune tolerance: constitutively expressed on a subset of regulatory T-cells (Tregs) and contributes to their suppressive function (By similarity). Also acts as a negative regulator of plasmacytoid dendritic cell (pDCs) activation (By similarity). Binds MHC class II (MHC-II); the precise role of MHC-II-binding is however unclear (PubMed:8647185).</p> |

| | |
|--------------------------|--|
| Cellular Location | [Lymphocyte activation gene 3 protein]: Cell membrane; Single-pass type I membrane protein |
| Tissue Location | Primarily expressed in activated T-cells and a subset of natural killer (NK) cells. |

Background

Involved in lymphocyte activation. Binds to HLA class-II antigens.

Images



Western Blot analysis of NIH-3T3 cells using CD223 Polyclonal Antibody.. Secondary antibody was diluted at 1:20000

Please note: All products are 'FOR RESEARCH USE ONLY. NOT FOR USE IN DIAGNOSTIC OR THERAPEUTIC PROCEDURES'.