

CMTM5 Polyclonal Antibody

Catalog # AP73668

Product Information

Application	WB, IHC-P, IF, ICC, E
Primary Accession	Q96DZ9
Reactivity	Human, Rat, Mouse
Host	Rabbit
Clonality	Polyclonal
Calculated MW	24653

Additional Information

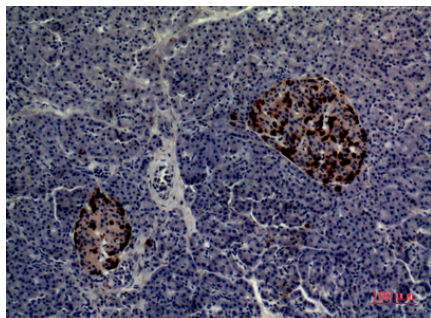
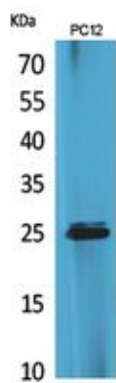
Gene ID	116173
Other Names	CMTM5; CKLFSF5; CKLF-like MARVEL transmembrane domain-containing protein 5; Chemokine-like factor superfamily member 5
Dilution	WB~~Western Blot: 1/500 - 1/2000. IHC-p: 1/100-1/300. ELISA: 1/20000. Not yet tested in other applications. IHC-P~~Western Blot: 1/500 - 1/2000. IHC-p: 1/100-1/300. ELISA: 1/20000. Not yet tested in other applications. IF~~1:50~200 ICC~~N/A E~~N/A
Format	Liquid in PBS containing 50% glycerol, 0.5% BSA and 0.09% (W/V) sodium azide.
Storage Conditions	-20°C

Protein Information

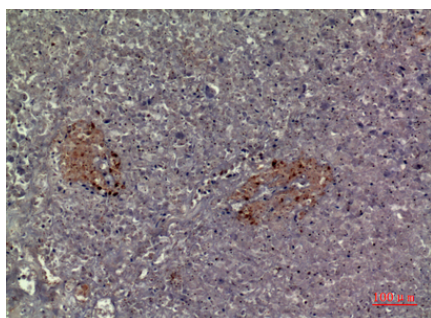
Name	CMTM5
Synonyms	CKLFSF5
Cellular Location	Membrane; Multi-pass membrane protein.
Tissue Location	Highly expressed in the brain.

Images

Western Blot analysis of PC12 cells using CMTM5 Polyclonal Antibody.. Secondary antibody was diluted at 1:20000



Immunohistochemical analysis of paraffin-embedded human-pancreas, antibody was diluted at 1:100



Immunohistochemical analysis of paraffin-embedded human-pancreas, antibody was diluted at 1:100

Please note: All products are 'FOR RESEARCH USE ONLY. NOT FOR USE IN DIAGNOSTIC OR THERAPEUTIC PROCEDURES'.