

VEGF-B Polyclonal Antibody

Catalog # AP73669

Product Information

Application	WB, IHC-P
Primary Accession	P49765
Reactivity	Human, Mouse, Rat
Host	Rabbit
Clonality	Polyclonal
Calculated MW	21602

Additional Information

Gene ID	7423
Other Names	VEGFB; VRF; Vascular endothelial growth factor B; VEGF-B; VEGF-related factor; VRF
Dilution	WB~~Western Blot: 1/500 - 1/2000. IHC-p: 1/100-1/300. ELISA: 1/20000. Not yet tested in other applications. IHC-P~~Western Blot: 1/500 - 1/2000. IHC-p: 1/100-1/300. ELISA: 1/20000. Not yet tested in other applications.
Format	Liquid in PBS containing 50% glycerol, 0.5% BSA and 0.09% (W/V) sodium azide.
Storage Conditions	-20°C

Protein Information

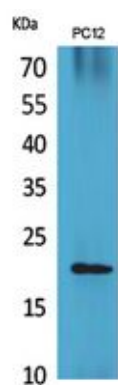
Name	VEGFB
Synonyms	VRF
Function	Growth factor for endothelial cells. VEGF-B167 binds heparin and neuropilin-1 whereas the binding to neuropilin-1 of VEGF-B186 is regulated by proteolysis.
Cellular Location	Secreted. Note=Secreted but remains associated to cells or to the extracellular matrix unless released by heparin
Tissue Location	Expressed in all tissues except liver. Highest levels found in heart, skeletal muscle and pancreas

Background

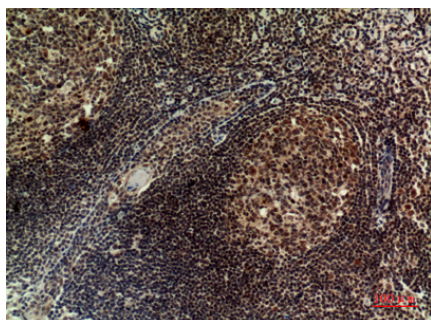
Growth factor for endothelial cells. VEGF-B167 binds heparin and neuropilin-1 whereas the binding to

neuropilin-1 of VEGF-B186 is regulated by proteolysis.

Images



Western Blot analysis of PC12 cells using VEGF-B Polyclonal Antibody.. Secondary antibody was diluted at 1:20000



Immunohistochemical analysis of paraffin-embedded human-tonsilla, antibody was diluted at 1:100

Please note: All products are 'FOR RESEARCH USE ONLY. NOT FOR USE IN DIAGNOSTIC OR THERAPEUTIC PROCEDURES'.