

SERPINH1 Antibody (C-term)

Purified Rabbit Polyclonal Antibody (Pab)

Catalog # AP7366b

Product Information

Application	WB, IHC-P, FC, E
Primary Accession	P50454
Other Accession	P29457 , P19324 , P13731 , Q2KJH6
Reactivity	Human
Predicted	Bovine, Chicken, Mouse, Rat
Host	Rabbit
Clonality	Polyclonal
Isotype	Rabbit IgG
Clone Names	RB18953
Calculated MW	46441
Antigen Region	390-418

Additional Information

Gene ID	871
Other Names	Serpin H1, 47 kDa heat shock protein, Arsenic-transactivated protein 3, AsTP3, Cell proliferation-inducing gene 14 protein, Collagen-binding protein, Colligin, Rheumatoid arthritis-related antigen RA-A47, SERPINH1, CBP1, CBP2, HSP47, SERPINH2
Target/Specificity	This SERPINH1 antibody is generated from rabbits immunized with a KLH conjugated synthetic peptide between 390-418 amino acids from the C-terminal region of human SERPINH1.
Dilution	WB~~1:1000 IHC-P~~1:100~500 FC~~1:10~50 E~~Use at an assay dependent concentration.
Format	Purified polyclonal antibody supplied in PBS with 0.09% (W/V) sodium azide. This antibody is prepared by Saturated Ammonium Sulfate (SAS) precipitation followed by dialysis against PBS.
Storage	Maintain refrigerated at 2-8°C for up to 2 weeks. For long term storage store at -20°C in small aliquots to prevent freeze-thaw cycles.
Precautions	SERPINH1 Antibody (C-term) is for research use only and not for use in diagnostic or therapeutic procedures.

Protein Information

Name	SERPINH1
-------------	----------

Synonyms	CBP1, CBP2, HSP47, SERPINH2
Function	Binds specifically to collagen. Could be involved as a chaperone in the biosynthetic pathway of collagen.
Cellular Location	Endoplasmic reticulum lumen.

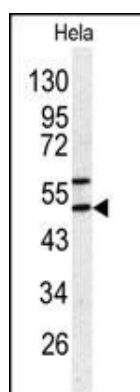
Background

SERPINH1 is a member of the serpin superfamily of serine proteinase inhibitors. Its expression is induced by heat shock. The protein localizes to the endoplasmic reticulum lumen and binds collagen; thus it is thought to be a molecular chaperone involved in the maturation of collagen molecules. Autoantibodies to this protein have been found in patients with rheumatoid arthritis.

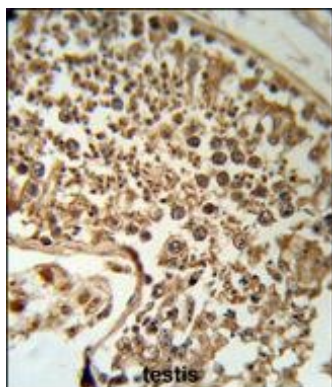
References

Araki,K., Br. J. Cancer 101 (3), 492-497 (2009)
Katagata,Y., J. Dermatol. Sci. 49 (1), 33-38 (2008)

Images

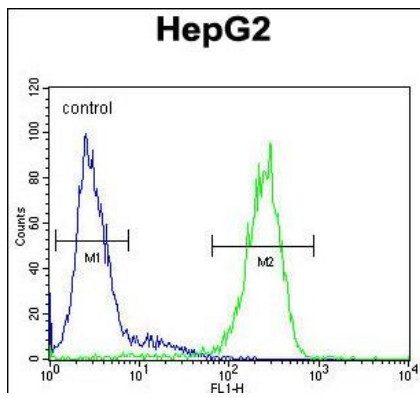


Western blot analysis of SERPINH1 antibody (C-term) (Cat.# AP7366b) in HeLa cell line lysates (35ug/lane). SERPINH1 (arrow) was detected using the purified Pab.



SERPINH1 Antibody (C-term) (RB18953) IHC analysis in formalin fixed and paraffin embedded human testis tissue followed by peroxidase conjugation of the secondary antibody and DAB staining. This data demonstrates the use of the SERPINH1 Antibody (C-term) for immunohistochemistry. Clinical relevance has not been evaluated.

SERPINH1 Antibody (C-term) (Cat. #AP7366b) flow cytometric analysis of HepG2 cells (right histogram) compared to a negative control cell (left histogram). FITC-conjugated goat-anti-rabbit secondary antibodies were used for the analysis.



Please note: All products are 'FOR RESEARCH USE ONLY. NOT FOR USE IN DIAGNOSTIC OR THERAPEUTIC PROCEDURES'.