

# SRY Polyclonal Antibody

Catalog # AP73680

## Product Information

Application	WB, IHC-P
Primary Accession	<a href="#">Q05066</a>
Reactivity	Human
Host	Rabbit
Clonality	Polyclonal
Calculated MW	23884

## Additional Information

Gene ID	6736
Other Names	SRY; TDF; Sex-determining region Y protein; Testis-determining factor
Dilution	WB~~Western Blot: 1/500 - 1/2000. IHC-p: 1/100-1/300. ELISA: 1/20000. Not yet tested in other applications. IHC-P~~Western Blot: 1/500 - 1/2000. IHC-p: 1/100-1/300. ELISA: 1/20000. Not yet tested in other applications.
Format	Liquid in PBS containing 50% glycerol, 0.5% BSA and 0.09% (W/V) sodium azide.
Storage Conditions	-20°C

## Protein Information

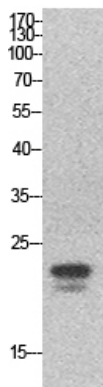
Name	SRY {ECO:0000303   PubMed:1695712, ECO:0000312   HGNC:HGNC:11311}
Function	<p>Transcriptional regulator that controls a genetic switch in male development (PubMed:<a href="#">11563911</a>). It is necessary and sufficient for initiating male sex determination by directing the development of supporting cell precursors (pre-Sertoli cells) as Sertoli rather than granulosa cells (PubMed:<a href="#">16414182</a>, PubMed:<a href="#">16996051</a>). Involved in different aspects of gene regulation including promoter activation or repression (PubMed:<a href="#">9525897</a>). Binds to the DNA consensus sequence 5'- [AT]AACAA[AT]-3' (PubMed:<a href="#">11563911</a>, PubMed:<a href="#">1425584</a>, PubMed:<a href="#">15170344</a>, PubMed:<a href="#">8159753</a>, PubMed:<a href="#">8265659</a>). SRY HMG box recognizes DNA by partial intercalation in the minor groove and promotes DNA bending (PubMed:<a href="#">11563911</a>, PubMed:<a href="#">1425584</a>, PubMed:<a href="#">15170344</a>, PubMed:<a href="#">16762365</a>, PubMed:<a href="#">8159753</a>, PubMed:<a href="#">8265659</a>). Also involved in pre-mRNA splicing (PubMed:<a href="#">11818535</a>). In male adult brain involved in the maintenance of motor functions of dopaminergic neurons (By similarity).</p>
Cellular Location	Nucleus speckle. Cytoplasm Nucleus. Note=Acetylation contributes to its nuclear localization and deacetylation by HDAC3 induces a cytoplasmic

delocalization (PubMed:15297880). Colocalizes with SOX6 in speckles (PubMed:11818535). Colocalizes with CAML in the nucleus (PubMed:15746192). Colocalizes in the nucleus with ZNF208 isoform KRAB- O and tyrosine hydroxylase (TH) (By similarity). Nuclear import is facilitated by XPO4, a protein that usually acts as a nuclear export signal receptor (PubMed:19349578). {ECO:0000250 | UniProtKB:Q05738, ECO:0000269 | PubMed:11818535, ECO:0000269 | PubMed:15297880, ECO:0000269 | PubMed:15746192, ECO:0000269 | PubMed:19349578}

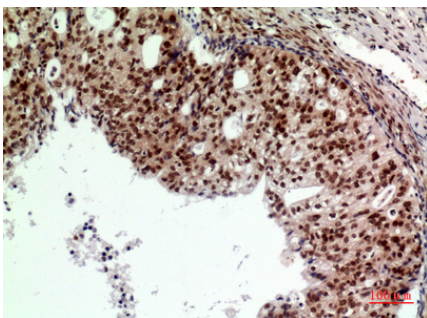
## Background

Transcriptional regulator that controls a genetic switch in male development. It is necessary and sufficient for initiating male sex determination by directing the development of supporting cell precursors (pre-Sertoli cells) as Sertoli rather than granulosa cells (By similarity). In male adult brain involved in the maintenance of motor functions of dopaminergic neurons (By similarity). Involved in different aspects of gene regulation including promoter activation or repression (By similarity). Promotes DNA bending. SRY HMG box recognizes DNA by partial intercalation in the minor groove. Also involved in pre-mRNA splicing. Binds to the DNA consensus sequence 5'-[AT]AACAA[AT]-3'.

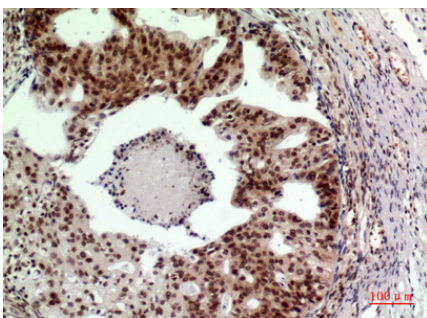
## Images



Western Blot analysis of HeLa cells using SRY Polyclonal Antibody.. Secondary antibody was diluted at 1:20000

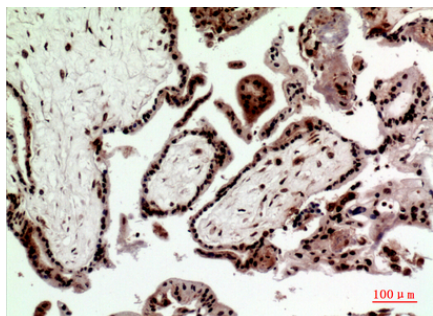
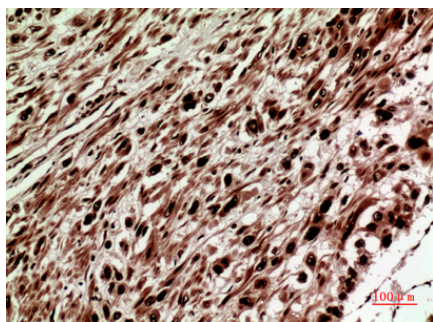


Immunohistochemical analysis of paraffin-embedded human-Ovarian-cancer, antibody was diluted at 1:100

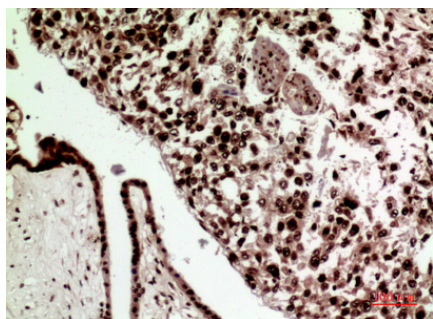


Immunohistochemical analysis of paraffin-embedded human-Ovarian-cancer, antibody was diluted at 1:100

Immunohistochemical analysis of paraffin-embedded human-Cervical-cancer, antibody was diluted at 1:100



Immunohistochemical analysis of paraffin-embedded human-Cervical-cancer, antibody was diluted at 1:100



Immunohistochemical analysis of paraffin-embedded human-Cervical-cancer, antibody was diluted at 1:100

Please note: All products are 'FOR RESEARCH USE ONLY. NOT FOR USE IN DIAGNOSTIC OR THERAPEUTIC PROCEDURES'.