

SREBP-1 Polyclonal Antibody

Catalog # AP73691

Product Information

Application	WB, IHC-P, IF, ICC, E
Primary Accession	P36956
Reactivity	Human, Mouse, Rat, Hamster
Host	Rabbit
Clonality	Polyclonal
Calculated MW	121675

Additional Information

Gene ID	6720
Other Names	SREBF1; BHLHD1; SREBP1; Sterol regulatory element-binding protein 1; SREBP-1; Class D basic helix-loop-helix protein 1; bHLHd1; Sterol regulatory element-binding transcription factor 1
Dilution	WB~~Western Blot: 1/500 - 1/2000. ELISA: 1/20000. Not yet tested in other applications. IHC-P~~N/A IF~~1:50~200 ICC~~N/A E~~N/A
Format	Liquid in PBS containing 50% glycerol, 0.5% BSA and 0.09% (W/V) sodium azide.
Storage Conditions	-20°C

Protein Information

Name	SREBF1 {ECO:0000303 PubMed:7759101, ECO:0000312 HGNC:HGNC:11289}
Function	[Sterol regulatory element-binding protein 1]: Precursor of the transcription factor form (Processed sterol regulatory element- binding protein 1), which is embedded in the endoplasmic reticulum membrane (PubMed: 32322062). Low sterol concentrations promote processing of this form, releasing the transcription factor form that translocates into the nucleus and activates transcription of genes involved in cholesterol biosynthesis and lipid homeostasis (By similarity).
Cellular Location	[Sterol regulatory element-binding protein 1]: Endoplasmic reticulum membrane; Multi- pass membrane protein. Golgi apparatus membrane; Multi-pass membrane protein. Cytoplasmic vesicle, COPII-coated vesicle membrane {ECO:0000250 UniProtKB:Q9WTN3}; Multi-pass membrane protein. Note=At high sterol concentrations, the SCAP-SREBP is retained in the endoplasmic reticulum. Low sterol concentrations promote recruitment into COPII-coated vesicles and transport of the SCAP-SREBP to the Golgi, where it is processed {ECO:0000250 UniProtKB:Q9WTN3} [Isoform SREBP-1aDelta]:

Nucleus

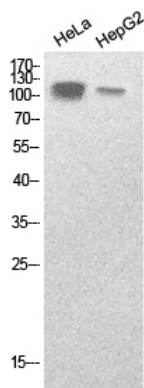
Tissue Location

Expressed in a wide variety of tissues, most abundant in liver and adrenal gland (PubMed:8402897). In fetal tissues lung and liver shows highest expression (PubMed:8402897) [Isoform SREBP-1C]: Predominantly expressed in liver and adipose tissues (PubMed:8402897). Also expressed in kidney, brain, white fat, and muscle (PubMed:8402897)

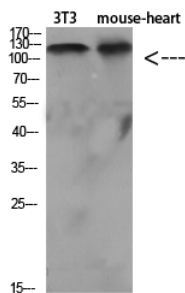
Background

Transcriptional activator required for lipid homeostasis. Regulates transcription of the LDL receptor gene as well as the fatty acid and to a lesser degree the cholesterol synthesis pathway (By similarity). Binds to the sterol regulatory element 1 (SRE-1) (5'-ATCACCCCAC-3'). Has dual sequence specificity binding to both an E-box motif (5'-ATCACGTGA-3') and to SRE-1 (5'-ATCACCCCAC-3').

Images



Western Blot analysis of HeLa, HepG2 cells using SREBP-1 Polyclonal Antibody.. Secondary antibody was diluted at 1:20000



Western Blot analysis of various cells using Antibody diluted at 1:1000. Secondary antibody was diluted at 1:20000

Please note: All products are 'FOR RESEARCH USE ONLY. NOT FOR USE IN DIAGNOSTIC OR THERAPEUTIC PROCEDURES'.