

# INDOL1 Polyclonal Antibody

Catalog # AP73698

## Product Information

---

Application	WB
Primary Accession	<a href="#">Q6ZQW0</a>
Reactivity	Human
Host	Rabbit
Clonality	Polyclonal
Calculated MW	45424

## Additional Information

---

Gene ID	169355
Other Names	IDO2; INDOL1; Indoleamine 2, 3-dioxygenase 2; IDO-2; Indoleamine 2, 3-dioxygenase-like protein 1; Indoleamine-pyrrole 2, 3-dioxygenase-like protein 1
Dilution	WB~~Western Blot: 1/500 - 1/2000. ELISA: 1/20000. Not yet tested in other applications.
Format	Liquid in PBS containing 50% glycerol, 0.5% BSA and 0.09% (W/V) sodium azide.
Storage Conditions	-20°C

## Protein Information

---

Name	IDO2 ( <a href="#">HGNC:27269</a> )
Function	Catalyzes the first and rate limiting step of the catabolism of the essential amino acid tryptophan along the kynurenine pathway (PubMed: <a href="#">17671174</a> ). Involved in immune regulation. May not play a significant role in tryptophan-related tumoral resistance (PubMed: <a href="#">25691885</a> ).
Tissue Location	Detected in liver, small intestine, spleen, placenta, thymus, lung, brain, kidney, and colon (PubMed:17671174) Also expressed at low level in testis and thyroid. Not expressed in the majority of human tumor samples (>99%) (PubMed:25691885)

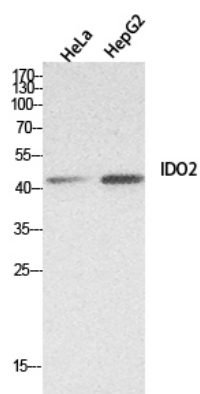
## Background

---

Catalyzes the first and rate limiting step of the catabolism of the essential amino acid tryptophan along the kynurenine pathway (PubMed:[17671174](#)). Involved in immune regulation. May not play a significant role in tryptophan-related tumoral resistance (PubMed:[25691885](#)).

## Images

---



Western Blot analysis of HeLa, HepG2 cells using INDOL1 Polyclonal Antibody.. Secondary antibody was diluted at 1:20000

Please note: All products are 'FOR RESEARCH USE ONLY. NOT FOR USE IN DIAGNOSTIC OR THERAPEUTIC PROCEDURES'.