

# TRPC3 Polyclonal Antibody

Catalog # AP73703

## Product Information

---

<b>Application</b>	WB, IHC-P, IF, ICC, E
<b>Primary Accession</b>	<a href="#">Q13507</a>
<b>Reactivity</b>	Human, Mouse, Rat
<b>Host</b>	Rabbit
<b>Clonality</b>	Polyclonal
<b>Calculated MW</b>	105538

## Additional Information

---

<b>Gene ID</b>	7222
<b>Other Names</b>	TRPC3; TRP3; Short transient receptor potential channel 3; TrpC3; Transient receptor protein 3; TRP-3; hTrp-3; hTrp3
<b>Dilution</b>	WB~~Western Blot: 1/500 - 1/2000. IHC-p: 1:100-1:300. ELISA: 1/20000. Not yet tested in other applications. IHC-P~~Western Blot: 1/500 - 1/2000. IHC-p: 1:100-1:300. ELISA: 1/20000. Not yet tested in other applications. IF~~1:50~200 ICC~~N/A E~~N/A
<b>Format</b>	Liquid in PBS containing 50% glycerol, 0.5% BSA and 0.09% (W/V) sodium azide.
<b>Storage Conditions</b>	-20°C

## Protein Information

---

<b>Name</b>	TRPC3
<b>Synonyms</b>	TRP3
<b>Function</b>	Forms a receptor-activated non-selective calcium permeant cation channel (PubMed: <a href="#">29726814</a> , PubMed: <a href="#">30139744</a> , PubMed: <a href="#">35051376</a> , PubMed: <a href="#">9417057</a> , PubMed: <a href="#">9930701</a> , PubMed: <a href="#">10611319</a> ).
<b>Cellular Location</b>	Cell membrane; Multi-pass membrane protein
<b>Tissue Location</b>	Expressed predominantly in brain and at much lower levels in ovary, colon, small intestine, lung, prostate, placenta and testis

## Background

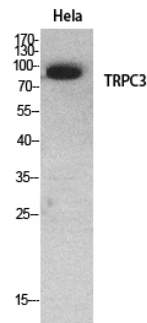
---

Thought to form a receptor-activated non-selective calcium permeant cation channel. Probably is operated

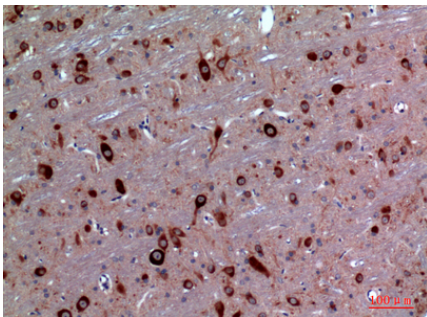
by a phosphatidylinositol second messenger system activated by receptor tyrosine kinases or G-protein coupled receptors. Activated by diacylglycerol (DAG) in a membrane-delimited fashion, independently of protein kinase C, and by inositol 1,4,5- triphosphate receptors (ITPR) with bound IP3. May also be activated by internal calcium store depletion.

## Images

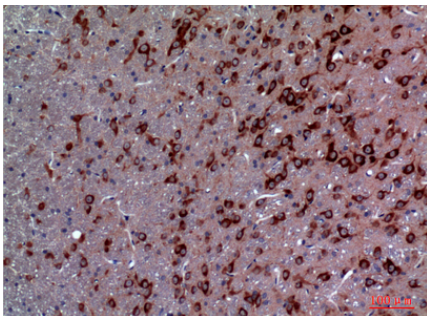
---



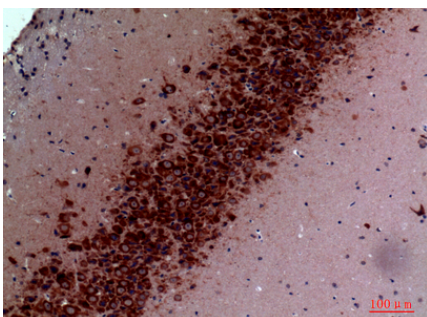
Western Blot analysis of HeLa cells using TRPC3 Polyclonal Antibody.. Secondary antibody was diluted at 1:20000



Immunohistochemical analysis of paraffin-embedded rat-brain, antibody was diluted at 1:100

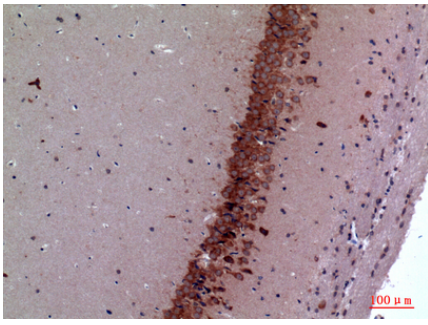


Immunohistochemical analysis of paraffin-embedded rat-brain, antibody was diluted at 1:100



Immunohistochemical analysis of paraffin-embedded mouse-brain, antibody was diluted at 1:100

Immunohistochemical analysis of paraffin-embedded mouse-brain, antibody was diluted at 1:100



Please note: All products are 'FOR RESEARCH USE ONLY. NOT FOR USE IN DIAGNOSTIC OR THERAPEUTIC PROCEDURES'.