

G-CSFR Polyclonal Antibody

Catalog # AP73710

Product Information

Application	WB
Primary Accession	Q99062
Reactivity	Human
Host	Rabbit
Clonality	Polyclonal
Calculated MW	92156

Additional Information

Gene ID	1441
Other Names	CSF3R; GCSFR; Granulocyte colony-stimulating factor receptor; G-CSF receptor; G-CSF-R; CD114
Dilution	WB~~Western Blot: 1/500 - 1/2000. ELISA: 1/20000. Not yet tested in other applications.
Format	Liquid in PBS containing 50% glycerol, 0.5% BSA and 0.09% (W/V) sodium azide.
Storage Conditions	-20°C

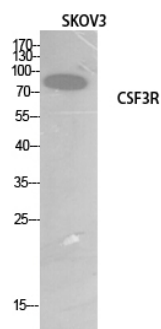
Protein Information

Name	CSF3R
Synonyms	GCSFR
Function	Receptor for granulocyte colony-stimulating factor (CSF3), essential for granulocytic maturation. Plays a crucial role in the proliferation, differentiation and survival of cells along the neutrophilic lineage. In addition it may function in some adhesion or recognition events at the cell surface.
Cellular Location	[Isoform 2]: Secreted.
Tissue Location	One or several isoforms have been found in myelogenous leukemia cell line KG-1, leukemia U-937 cell line, in bone marrow cells, placenta, and peripheral blood granulocytes. Isoform GCSFR-2 is found only in leukemia U-937 cells. Isoform GCSFR-3 is highly expressed in placenta

Background

Receptor for granulocyte colony-stimulating factor (CSF3), essential for granulocytic maturation. Plays a crucial role in the proliferation, differentiation and survival of cells along the neutrophilic lineage. In addition it may function in some adhesion or recognition events at the cell surface.

Images



Western Blot analysis of SKOV3 cells using G-CSFR Polyclonal Antibody.. Secondary antibody was diluted at 1:20000

Please note: All products are 'FOR RESEARCH USE ONLY. NOT FOR USE IN DIAGNOSTIC OR THERAPEUTIC PROCEDURES'.