

PSA Polyclonal Antibody

Catalog # AP73734

Product Information

Application	WB, IHC-P
Primary Accession	P07288
Reactivity	Human
Host	Rabbit
Clonality	Polyclonal
Calculated MW	28741

Additional Information

Gene ID	354
Other Names	KLK3; APS; Prostate-specific antigen; PSA; Gamma-seminoprotein; Semin; Kallikrein-3; P-30 antigen; Semenogelase
Dilution	WB~~Western Blot: 1/500 - 1/2000. IHC-p: 1:100-1:300. ELISA: 1/10000. Not yet tested in other applications. IHC-P~~Western Blot: 1/500 - 1/2000. IHC-p: 1:100-1:300. ELISA: 1/10000. Not yet tested in other applications.
Format	Liquid in PBS containing 50% glycerol, 0.5% BSA and 0.09% (W/V) sodium azide.
Storage Conditions	-20°C

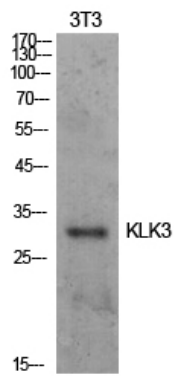
Protein Information

Name	KLK3
Synonyms	APS
Function	Hydrolyzes semenogelin-1 thus leading to the liquefaction of the seminal coagulum.
Cellular Location	Secreted.

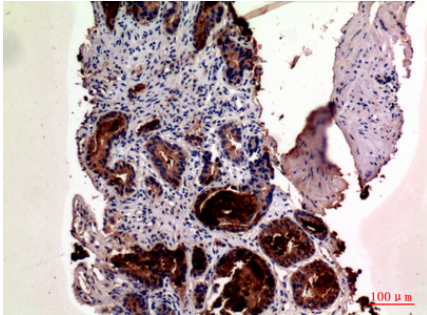
Background

Hydrolyzes semenogelin-1 thus leading to the liquefaction of the seminal coagulum.

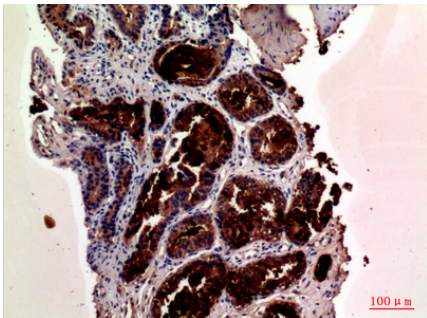
Images



Western Blot analysis of NIH-3T3 cells using PSA Polyclonal Antibody.. Secondary antibody was diluted at 1:20000



Immunohistochemical analysis of paraffin-embedded human-prostate-cancer, antibody was diluted at 1:100



Immunohistochemical analysis of paraffin-embedded human-prostate-cancer, antibody was diluted at 1:100

Please note: All products are 'FOR RESEARCH USE ONLY. NOT FOR USE IN DIAGNOSTIC OR THERAPEUTIC PROCEDURES'.