

# AChR $\alpha$ 1 Polyclonal Antibody

Catalog # AP73738

## Product Information

---

<b>Application</b>	WB, IF, ICC, E
<b>Primary Accession</b>	<a href="#">P02708</a>
<b>Reactivity</b>	Human, Mouse, Rat
<b>Host</b>	Rabbit
<b>Clonality</b>	Polyclonal

## Additional Information

---

<b>Other Names</b>	CHRNA1; ACHRA; CHNRA; Acetylcholine receptor subunit alpha
<b>Dilution</b>	WB--Western Blot: 1/500 - 1/2000. ELISA: 1/10000. Not yet tested in other applications. IF--1:50~200 ICC--N/A E--N/A
<b>Format</b>	Liquid in PBS containing 50% glycerol, 0.5% BSA and 0.09% (W/V) sodium azide.
<b>Storage Conditions</b>	-20°C

## Protein Information

---

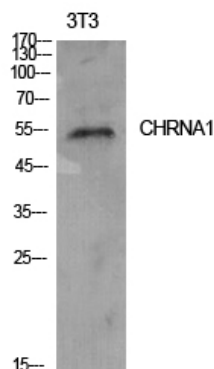
## Background

---

After binding acetylcholine, the AChR responds by an extensive change in conformation that affects all subunits and leads to opening of an ion-conducting channel across the plasma membrane.

## Images

---



Western Blot analysis of NIH-3T3 cells using AChR $\alpha$ 1 Polyclonal Antibody.. Secondary antibody was diluted at 1:20000

Please note: All products are 'FOR RESEARCH USE ONLY. NOT FOR USE IN DIAGNOSTIC OR THERAPEUTIC PROCEDURES'.