

# AID Polyclonal Antibody

Catalog # AP73749

## Product Information

---

<b>Application</b>	WB, IHC-P, IF, ICC, E
<b>Primary Accession</b>	<a href="#">Q9GZX7</a>
<b>Reactivity</b>	Human, Mouse, Rat
<b>Host</b>	Rabbit
<b>Clonality</b>	Polyclonal

## Additional Information

---

<b>Other Names</b>	AICDA; AID; Activation-induced cytidine deaminase; Cytidine aminohydrolase
<b>Dilution</b>	WB~~Western Blot: 1/500 - 1/2000. IHC-p: 1:100-1:300. ELISA: 1/10000. Not yet tested in other applications. IHC-P~~Western Blot: 1/500 - 1/2000. IHC-p: 1:100-1:300. ELISA: 1/10000. Not yet tested in other applications. IF~~1:50~200 ICC~~N/A E~~N/A
<b>Format</b>	Liquid in PBS containing 50% glycerol, 0.5% BSA and 0.09% (W/V) sodium azide.
<b>Storage Conditions</b>	-20°C

## Protein Information

---

### Background

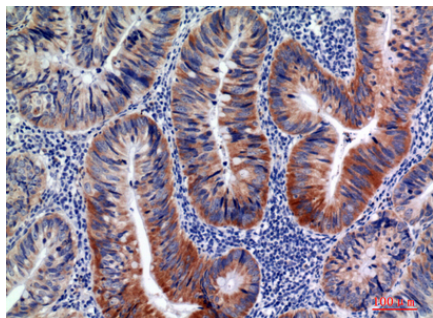
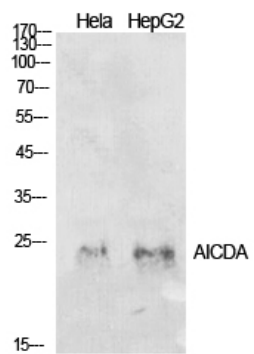
---

Single-stranded DNA-specific cytidine deaminase. Involved in somatic hypermutation (SHM), gene conversion, and class-switch recombination (CSR) in B-lymphocytes by deaminating C to U during transcription of Ig-variable (V) and Ig-switch (S) region DNA. Required for several crucial steps of B-cell terminal differentiation necessary for efficient antibody responses (PubMed:[18722174](#), PubMed:[21385873](#), PubMed:[21518874](#), PubMed:[27716525](#)). May also play a role in the epigenetic regulation of gene expression by participating in DNA demethylation (PubMed:[21496894](#)).

### Images

---

Western Blot analysis of HeLa, HepG2 cells using AID Polyclonal Antibody.. Secondary antibody was diluted at 1:20000



Immunohistochemical analysis of paraffin-embedded human-colon-cancer, antibody was diluted at 1:100

Please note: All products are 'FOR RESEARCH USE ONLY. NOT FOR USE IN DIAGNOSTIC OR THERAPEUTIC PROCEDURES'.