

SOD-2 Polyclonal Antibody

Catalog # AP73758

Product Information

| | |
|--------------------------|------------------------|
| Application | WB, IHC-P, IF, ICC, E |
| Primary Accession | P04179 |
| Reactivity | Human, Mouse, Rat |
| Host | Rabbit |
| Clonality | Polyclonal |
| Calculated MW | 24750 |

Additional Information

| | |
|---------------------------|--|
| Gene ID | 6648 |
| Other Names | SOD2; Superoxide dismutase [Mn], mitochondrial |
| Dilution | WB~~IHC-p: 100-300.Western Blot: 1/500 - 1/2000. ELISA: 1/10000. Not yet tested in other applications. IHC-P~~N/A IF~~1:50~200 ICC~~N/A E~~N/A |
| Format | Liquid in PBS containing 50% glycerol, 0.5% BSA and 0.09% (W/V) sodium azide. |
| Storage Conditions | -20°C |

Protein Information

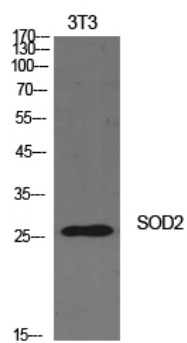
| | |
|--------------------------|--|
| Name | SOD2 |
| Function | Destroys superoxide anion radicals which are normally produced within the cells and which are toxic to biological systems. |
| Cellular Location | Mitochondrion matrix. |

Background

Destroys superoxide anion radicals which are normally produced within the cells and which are toxic to biological systems.

Images

Western Blot analysis of NIH-3T3 cells using SOD-2 Polyclonal Antibody.. Secondary antibody was diluted at 1:20000



Please note: All products are 'FOR RESEARCH USE ONLY. NOT FOR USE IN DIAGNOSTIC OR THERAPEUTIC PROCEDURES'.