

CD20 Polyclonal Antibody

Catalog # AP73764

Product Information

Application	WB
Primary Accession	P11836
Reactivity	Human
Host	Rabbit
Clonality	Polyclonal
Calculated MW	33077

Additional Information

Gene ID	931
Other Names	MS4A1; CD20; B-lymphocyte antigen CD20; B-lymphocyte surface antigen B1; Bp35; Leukocyte surface antigen Leu-16; Membrane-spanning 4-domains subfamily A member 1; CD20
Dilution	WB~~Western Blot: 1/500 - 1/2000. ELISA: 1/10000. Not yet tested in other applications.
Format	Liquid in PBS containing 50% glycerol, 0.5% BSA and 0.09% (W/V) sodium azide.
Storage Conditions	-20°C

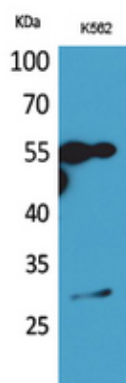
Protein Information

Name	MS4A1
Synonyms	CD20
Function	B-lymphocyte-specific membrane protein that plays a role in the regulation of cellular calcium influx necessary for the development, differentiation, and activation of B-lymphocytes (PubMed: 12920111 , PubMed: 3925015 , PubMed: 7684739). Functions as a store-operated calcium (SOC) channel component promoting calcium influx after activation by the B-cell receptor/BCR (PubMed: 12920111 , PubMed: 18474602 , PubMed: 7684739).
Cellular Location	Cell membrane; Multi-pass membrane protein. Cell membrane; Lipid-anchor. Note=Constitutively associated with membrane rafts.
Tissue Location	Expressed on B-cells.

Background

This protein may be involved in the regulation of B-cell activation and proliferation.

Images



Western Blot analysis of K562 cells using CD20 Polyclonal Antibody.. Secondary antibody was diluted at 1:20000 cells nucleus extracted by Minute TM Cytoplasmic and Nuclear Fractionation kit (SC-003, Invent biotech, MN, USA).

Please note: All products are 'FOR RESEARCH USE ONLY. NOT FOR USE IN DIAGNOSTIC OR THERAPEUTIC PROCEDURES'.