

# Integrin $\alpha$ 5 Polyclonal Antibody

Catalog # AP73772

## Product Information

Application	WB, IHC-P
Primary Accession	<a href="#">P08648</a>
Reactivity	Human, Mouse, Rat
Host	Rabbit
Clonality	Polyclonal
Calculated MW	114536

## Additional Information

Gene ID	3678
Other Names	ITGA5; FNRA; Integrin alpha-5; CD49 antigen-like family member E; Fibronectin receptor subunit alpha; Integrin alpha-F; VLA-5; CD49e
Dilution	WB~~Western Blot: 1/500 - 1/2000. IHC-p: 1:100-1:300. ELISA: 1/10000. Not yet tested in other applications. IHC-P~~N/A
Format	Liquid in PBS containing 50% glycerol, 0.5% BSA and 0.09% (W/V) sodium azide.
Storage Conditions	-20°C

## Protein Information

Name	ITGA5 ( <a href="#">HGNC:6141</a> )
Synonyms	FNRA
Function	<p>Integrin alpha-5/beta-1 (ITGA5:ITGB1) is a receptor for fibronectin and fibrinogen. It recognizes the sequence R-G-D in its ligands. ITGA5:ITGB1 binds to PLA2G2A via a site (site 2) which is distinct from the classical ligand-binding site (site 1) and this induces integrin conformational changes and enhanced ligand binding to site 1 (PubMed:<a href="#">18635536</a>, PubMed:<a href="#">25398877</a>). ITGA5:ITGB1 acts as a receptor for fibrillin-1 (FBN1) and mediates R-G-D-dependent cell adhesion to FBN1 (PubMed:<a href="#">12807887</a>, PubMed:<a href="#">17158881</a>). ITGA5:ITGB1 acts as a receptor for fibronectin (FN1) and mediates R-G-D-dependent cell adhesion to FN1 (PubMed:<a href="#">33962943</a>). ITGA5:ITGB1 is a receptor for IL1B and binding is essential for IL1B signaling (PubMed:<a href="#">29030430</a>). ITGA5:ITGB3 is a receptor for soluble CD40LG and is required for CD40/CD40LG signaling (PubMed:<a href="#">31331973</a>).</p>
Cellular Location	Cell membrane; Single-pass type I membrane protein. Cell junction, focal adhesion

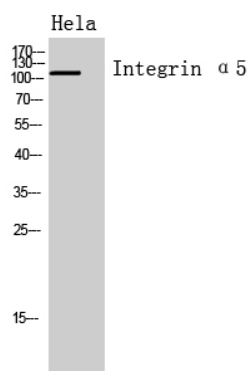
## Tissue Location

Expressed in placenta (at protein level).

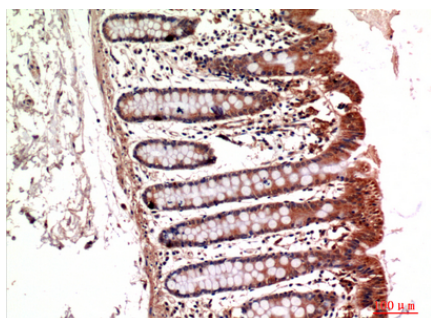
## Background

Integrin alpha-5/beta-1 (ITGA5:ITGB1) is a receptor for fibronectin and fibrinogen. It recognizes the sequence R-G-D in its ligands. ITGA5:ITGB1 binds to PLA2G2A via a site (site 2) which is distinct from the classical ligand-binding site (site 1) and this induces integrin conformational changes and enhanced ligand binding to site 1 (PubMed:[18635536](#), PubMed:[25398877](#)). ITGA5:ITGB1 acts as a receptor for fibrillin-1 (FBN1) and mediates R-G-D-dependent cell adhesion to FBN1 (PubMed:[12807887](#), PubMed:[17158881](#)). ITGA5:ITGB1 is a receptor for IL1B and binding is essential for IL1B signaling (PubMed:[29030430](#)).

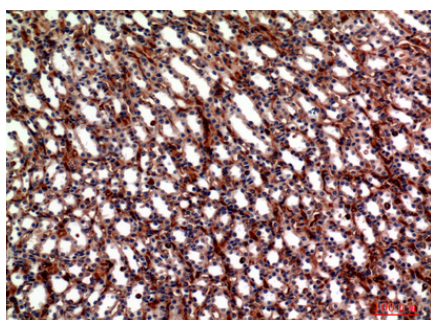
## Images



Western Blot analysis of Hela cells using Integrin α5 Polyclonal Antibody.. Secondary antibody was diluted at 1:20000



Immunohistochemical analysis of paraffin-embedded mouse-kidney, antibody was diluted at 1:100



Immunohistochemical analysis of paraffin-embedded mouse-kidney, antibody was diluted at 1:100

Please note: All products are 'FOR RESEARCH USE ONLY. NOT FOR USE IN DIAGNOSTIC OR THERAPEUTIC PROCEDURES'.