

ICAM-2 Polyclonal Antibody

Catalog # AP73784

Product Information

Application	WB
Primary Accession	P13598
Reactivity	Human
Host	Rabbit
Clonality	Polyclonal
Calculated MW	30654

Additional Information

Gene ID	3384
Other Names	ICAM2; Intercellular adhesion molecule 2; ICAM-2; CD102
Dilution	WB~~Western Blot: 1/500 - 1/2000. ELISA: 1/10000. Not yet tested in other applications.
Format	Liquid in PBS containing 50% glycerol, 0.5% BSA and 0.09% (W/V) sodium azide.
Storage Conditions	-20°C

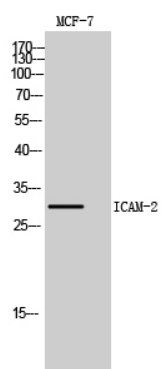
Protein Information

Name	ICAM2
Function	ICAM proteins are ligands for the leukocyte adhesion protein LFA-1 (integrin alpha-L/beta-2). ICAM2 may play a role in lymphocyte recirculation by blocking LFA-1-dependent cell adhesion. It mediates adhesive interactions important for antigen-specific immune response, NK-cell mediated clearance, lymphocyte recirculation, and other cellular interactions important for immune response and surveillance.
Cellular Location	Membrane; Single-pass type I membrane protein. Cell projection, microvillus {ECO:0000250 UniProtKB:P35330}. Note=Co-localizes with RDX, EZR and MSN in microvilli. {ECO:0000250 UniProtKB:P35330}

Background

ICAM proteins are ligands for the leukocyte adhesion protein LFA-1 (integrin alpha-L/beta-2). ICAM2 may play a role in lymphocyte recirculation by blocking LFA-1-dependent cell adhesion. It mediates adhesive interactions important for antigen-specific immune response, NK-cell mediated clearance, lymphocyte recirculation, and other cellular interactions important for immune response and surveillance.

Images



Western Blot analysis of MCF7, HepG2 cells using ICAM-2 Polyclonal Antibody.. Secondary antibody was diluted at 1:20000

Please note: All products are 'FOR RESEARCH USE ONLY. NOT FOR USE IN DIAGNOSTIC OR THERAPEUTIC PROCEDURES'.