

# Ox40L Polyclonal Antibody

Catalog # AP73803

## Product Information

---

<b>Application</b>	WB, IHC-P, IF, ICC, E
<b>Primary Accession</b>	<a href="#">P23510</a>
<b>Reactivity</b>	Human, Rat, Mouse
<b>Host</b>	Rabbit
<b>Clonality</b>	Polyclonal
<b>Calculated MW</b>	21050

## Additional Information

---

<b>Gene ID</b>	7292
<b>Other Names</b>	TNFSF4; TXGP1; Tumor necrosis factor ligand superfamily member 4; Glycoprotein Gp34; OX40 ligand; OX40L; TAX transcriptionally-activated glycoprotein 1; CD252
<b>Dilution</b>	WB~~Western Blot: 1/500 - 1/2000. IHC-p: 1:100-1:300. ELISA: 1/10000. Not yet tested in other applications. IHC-P~~Western Blot: 1/500 - 1/2000. IHC-p: 1:100-1:300. ELISA: 1/10000. Not yet tested in other applications. IF~~1:50~200 ICC~~N/A E~~N/A
<b>Format</b>	Liquid in PBS containing 50% glycerol, 0.5% BSA and 0.09% (W/V) sodium azide.
<b>Storage Conditions</b>	-20°C

## Protein Information

---

<b>Name</b>	TNFSF4
<b>Synonyms</b>	TXGP1
<b>Function</b>	Cytokine that binds to TNFRSF4. Co-stimulates T-cell proliferation and cytokine production.
<b>Cellular Location</b>	Membrane; Single-pass type II membrane protein.

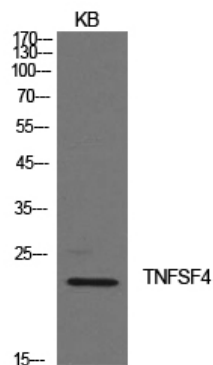
## Background

---

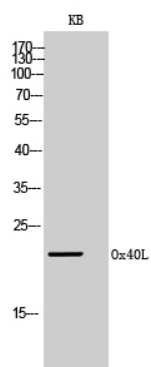
Cytokine that binds to TNFRSF4. Co-stimulates T-cell proliferation and cytokine production.

## Images

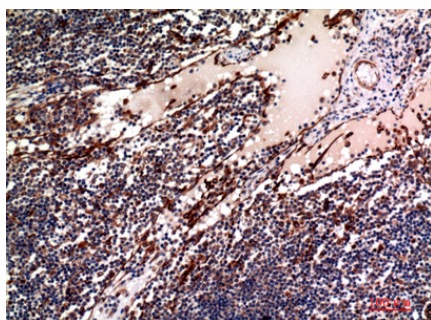
---



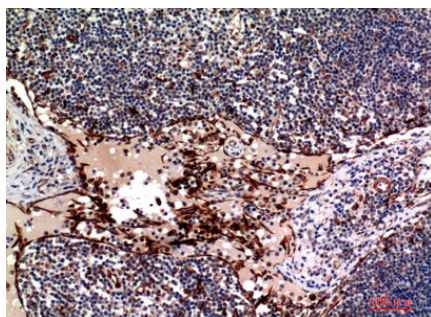
Western Blot analysis of KB cells using Ox40L Polyclonal Antibody.. Secondary antibody was diluted at 1:20000



Western Blot analysis of KB cells using Ox40L Polyclonal Antibody. Secondary antibody was diluted at 1:20000



Immunohistochemical analysis of paraffin-embedded human-lymph, antibody was diluted at 1:100



Immunohistochemical analysis of paraffin-embedded human-lymph, antibody was diluted at 1:100

Please note: All products are 'FOR RESEARCH USE ONLY. NOT FOR USE IN DIAGNOSTIC OR THERAPEUTIC PROCEDURES'.