

CD30-L Polyclonal Antibody

Catalog # AP73805

Product Information

Application	WB
Primary Accession	P32971
Reactivity	Human
Host	Rabbit
Clonality	Polyclonal
Calculated MW	26017

Additional Information

Gene ID	944
Other Names	TNFSF8; CD30L; CD30LG; Tumor necrosis factor ligand superfamily member 8; CD30 ligand; CD30-L; CD153
Dilution	WB~~Western Blot: 1/500 - 1/2000. ELISA: 1/10000. Not yet tested in other applications.
Format	Liquid in PBS containing 50% glycerol, 0.5% BSA and 0.09% (W/V) sodium azide.
Storage Conditions	-20°C

Protein Information

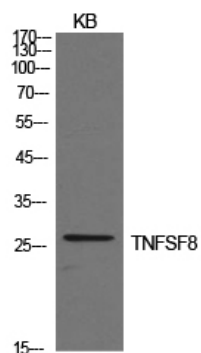
Name	TNFSF8
Synonyms	CD30L, CD30LG
Function	Cytokine that binds to TNFRSF8/CD30. Induces proliferation of T-cells.
Cellular Location	Membrane; Single-pass type II membrane protein.

Background

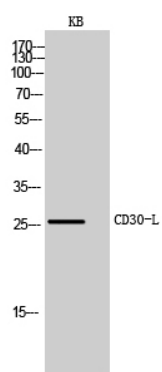
Cytokine that binds to TNFRSF8/CD30. Induces proliferation of T-cells.

Images

Western Blot analysis of KB cells using CD30-L Polyclonal Antibody.. Secondary antibody was diluted at 1:20000



Western Blot analysis of KB cells using CD30-L Polyclonal Antibody. Secondary antibody was diluted at 1:20000



Please note: All products are 'FOR RESEARCH USE ONLY. NOT FOR USE IN DIAGNOSTIC OR THERAPEUTIC PROCEDURES'.