

CD240d Polyclonal Antibody

Catalog # AP73809

Product Information

Application	WB
Primary Accession	Q02161
Reactivity	Human
Host	Rabbit
Clonality	Polyclonal
Calculated MW	45211

Additional Information

Gene ID	6007
Other Names	RHD; Blood group Rh(D) polypeptide; RHXIII; Rh polypeptide 2; RhPII; Rhesus D antigen; CD240D
Dilution	WB~~Western Blot: 1/500 - 1/2000. ELISA: 1/10000. Not yet tested in other applications.
Format	Liquid in PBS containing 50% glycerol, 0.5% BSA and 0.09% (W/V) sodium azide.
Storage Conditions	-20°C

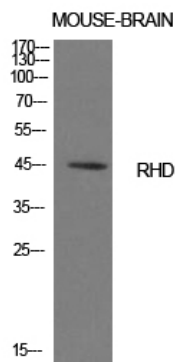
Protein Information

Name	RHD
Function	May be part of an oligomeric complex which is likely to have a transport or channel function in the erythrocyte membrane.
Cellular Location	Cell membrane; Multi-pass membrane protein
Tissue Location	Restricted to tissues or cell lines expressing erythroid characters

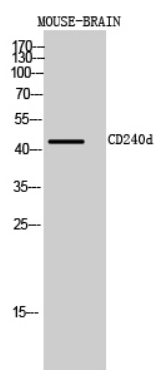
Background

May be part of an oligomeric complex which is likely to have a transport or channel function in the erythrocyte membrane.

Images



Western Blot analysis of mouse brain cells using CD240d Polyclonal Antibody. Antibody was diluted at 1:1000. Secondary antibody was diluted at 1:20000



Western Blot analysis of MOUSE-BRAIN cells using CD240d Polyclonal Antibody diluted at 1 : 1000. Secondary antibody was diluted at 1:20000

Please note: All products are 'FOR RESEARCH USE ONLY. NOT FOR USE IN DIAGNOSTIC OR THERAPEUTIC PROCEDURES'.