

# CD180 Polyclonal Antibody

Catalog # AP73812

## Product Information

---

<b>Application</b>	WB
<b>Primary Accession</b>	<a href="#">Q99467</a>
<b>Reactivity</b>	Human, Mouse, Rat
<b>Host</b>	Rabbit
<b>Clonality</b>	Polyclonal
<b>Calculated MW</b>	74179

## Additional Information

---

<b>Gene ID</b>	4064
<b>Other Names</b>	CD180; LY64; RP105; CD180 antigen; Lymphocyte antigen 64; Radioprotective 105 kDa protein; CD180
<b>Dilution</b>	WB~~Western Blot: 1/500 - 1/2000. ELISA: 1/10000. Not yet tested in other applications.
<b>Format</b>	Liquid in PBS containing 50% glycerol, 0.5% BSA and 0.09% (W/V) sodium azide.
<b>Storage Conditions</b>	-20°C

## Protein Information

---

<b>Name</b>	CD180
<b>Synonyms</b>	LY64, RP105
<b>Function</b>	May cooperate with MD-1 and TLR4 to mediate the innate immune response to bacterial lipopolysaccharide (LPS) in B-cells. Leads to NF- kappa-B activation. Also involved in the life/death decision of B-cells (By similarity).
<b>Cellular Location</b>	Cell membrane; Single-pass type I membrane protein
<b>Tissue Location</b>	Expressed mainly on mature peripheral B cells. Detected in spleen, lymph node and appendix. Not detected in pre-B and -T cells

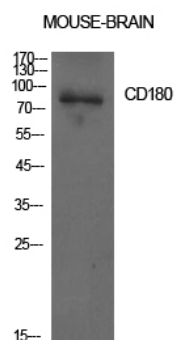
## Background

---

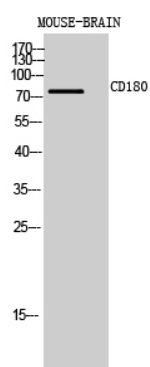
May cooperate with MD-1 and TLR4 to mediate the innate immune response to bacterial lipopolysaccharide (LPS) in B-cells. Leads to NF-kappa-B activation. Also involved in the life/death decision of B-cells (By similarity).

## Images

---



Western Blot analysis of mouse brain cells using CD180 Polyclonal Antibody. Antibody was diluted at 1:1000. Secondary antibody was diluted at 1:20000



Western Blot analysis of MOUSE-BRAIN cells using CD180 Polyclonal Antibody diluted at 1 : 1000. Secondary antibody was diluted at 1:20000

Please note: All products are 'FOR RESEARCH USE ONLY. NOT FOR USE IN DIAGNOSTIC OR THERAPEUTIC PROCEDURES'.