

CD300d Polyclonal Antibody

Catalog # AP73819

Product Information

Application	WB
Primary Accession	Q6UXZ3
Reactivity	Human
Host	Rabbit
Clonality	Polyclonal
Calculated MW	21558

Additional Information

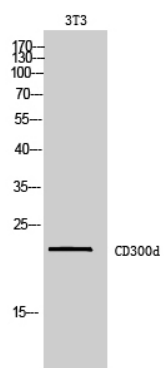
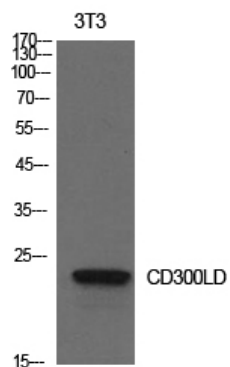
Gene ID	100131439
Other Names	CD300LD; CD300D; CMRF35A4; CMRF35-like molecule 4; CLM-4; CD300 antigen-like family member D; CMRF35-A4; CD300d
Dilution	WB~~Western Blot: 1/500 - 1/2000. ELISA: 1/10000. Not yet tested in other applications.
Format	Liquid in PBS containing 50% glycerol, 0.5% BSA and 0.09% (W/V) sodium azide.
Storage Conditions	-20°C

Protein Information

Name	CD300LD
Cellular Location	Cell membrane; Single-pass type I membrane protein Note=Cell surface localization requires the ITAM-bearing Fc receptor FCER1G to overcome ER retention
Tissue Location	Expression seems restricted to cells of myeloid lineage.

Images

Western Blot analysis of NIH-3T3 cells using CD300d Polyclonal Antibody.. Secondary antibody was diluted at 1:20000



Western Blot analysis of 3T3 cells using CD300d Polyclonal Antibody. Secondary antibody was diluted at 1:20000

Please note: All products are 'FOR RESEARCH USE ONLY. NOT FOR USE IN DIAGNOSTIC OR THERAPEUTIC PROCEDURES'.