

CD249 Polyclonal Antibody

Catalog # AP73822

Product Information

Application	WB, IHC-P
Primary Accession	Q07075
Reactivity	Human, Mouse, Rat
Host	Rabbit
Clonality	Polyclonal
Calculated MW	109244

Additional Information

Gene ID	2028
Other Names	ENPEP; Glutamyl aminopeptidase; EAP; Aminopeptidase A; AP-A; Differentiation antigen gp160; CD249
Dilution	WB~~Western Blot: 1/500 - 1/2000. IHC-p: 1:100-1:300. ELISA: 1/10000. Not yet tested in other applications. IHC-P~~N/A
Format	Liquid in PBS containing 50% glycerol, 0.5% BSA and 0.09% (W/V) sodium azide.
Storage Conditions	-20°C

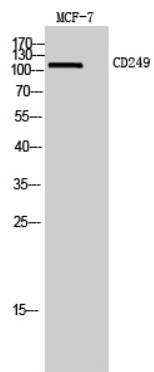
Protein Information

Name	ENPEP
Function	Regulates central hypertension through its calcium-modulated preference to cleave N-terminal acidic residues from peptides such as angiotensin II.
Cellular Location	Cell membrane; Single-pass type II membrane protein
Tissue Location	Expressed in choriocarcinoma cancer cell lines (at protein level) (PubMed:10692253). Expressed by epithelial cells of the proximal tubule cells and the glomerulus of the nephron. Also found in a variety of other tissues.

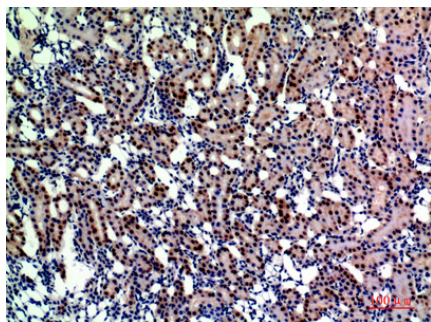
Background

Regulates central hypertension through its calcium- modulated preference to cleave N-terminal acidic residues from peptides such as angiotensin II.

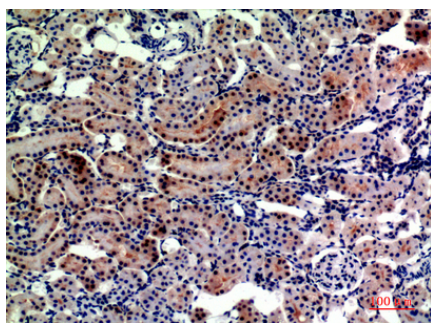
Images



Western Blot analysis of MCF7 cells using CD249 Polyclonal Antibody.. Secondary antibody was diluted at 1:20000



Immunohistochemical analysis of paraffin-embedded rat-kidney, antibody was diluted at 1:200



Immunohistochemical analysis of paraffin-embedded rat-kidney, antibody was diluted at 1:200

Please note: All products are 'FOR RESEARCH USE ONLY. NOT FOR USE IN DIAGNOSTIC OR THERAPEUTIC PROCEDURES'.