

CD206 Polyclonal Antibody

Catalog # AP73823

Product Information

Application	WB, IHC-P
Primary Accession	P22897
Reactivity	Human
Host	Rabbit
Clonality	Polyclonal
Calculated MW	166012

Additional Information

Gene ID	4360
Other Names	MRC1; CLEC13D; CLEC13DL; MRC1L1; Macrophage mannose receptor 1; MMR; C-type lectin domain family 13 member D; C-type lectin domain family 13 member D-like; Macrophage mannose receptor 1-like protein 1; CD206
Dilution	WB~~Western Blot: 1/500 - 1/2000. IHC-p: 1:100-1:300. ELISA: 1/10000. Not yet tested in other applications. IHC-P~~Western Blot: 1/500 - 1/2000. IHC-p: 1:100-1:300. ELISA: 1/10000. Not yet tested in other applications.
Format	Liquid in PBS containing 50% glycerol, 0.5% BSA and 0.09% (W/V) sodium azide.
Storage Conditions	-20°C

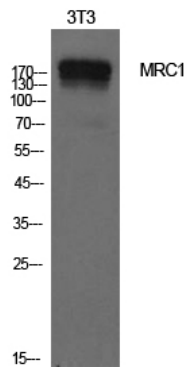
Protein Information

Name	MRC1
Synonyms	CLEC13D, CLEC13DL, MRC1L1
Function	Mediates the endocytosis of glycoproteins by macrophages. Binds both sulfated and non-sulfated polysaccharide chains. (Microbial infection) Acts as a receptor for Dengue virus envelope protein E.
Cellular Location	Endosome membrane; Single-pass type I membrane protein. Cell membrane; Single-pass type I membrane protein

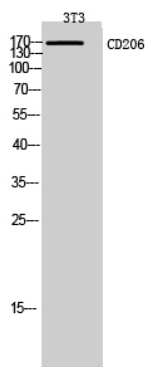
Background

Mediates the endocytosis of glycoproteins by macrophages. Binds both sulfated and non-sulfated polysaccharide chains. (Microbial infection) Acts as a receptor for Dengue virus envelope protein E.

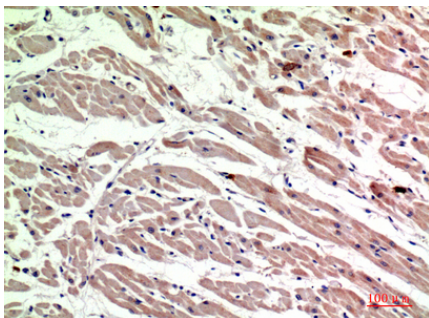
Images



Western Blot analysis of NIH-3T3 cells using CD206 Polyclonal Antibody.. Secondary antibody was diluted at 1:20000



Western Blot analysis of 3T3 cells using CD206 Polyclonal Antibody. Secondary antibody was diluted at 1:20000



Immunohistochemical analysis of paraffin-embedded human-heart, antibody was diluted at 1:200

Please note: All products are 'FOR RESEARCH USE ONLY. NOT FOR USE IN DIAGNOSTIC OR THERAPEUTIC PROCEDURES'.