

Probetacellulin Polyclonal Antibody

Catalog # AP73825

Product Information

Application	WB
Primary Accession	P35070
Reactivity	Human
Host	Rabbit
Clonality	Polyclonal
Calculated MW	19746

Additional Information

Gene ID	685
Other Names	BTC; Probetacellulin
Dilution	WB~~Western Blot: 1/500 - 1/2000. ELISA: 1/10000. Not yet tested in other applications.
Format	Liquid in PBS containing 50% glycerol, 0.5% BSA and 0.09% (W/V) sodium azide.
Storage Conditions	-20°C

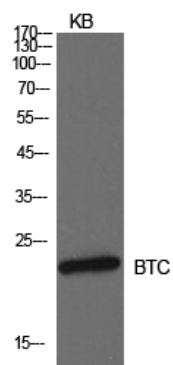
Protein Information

Name	BTC
Function	Growth factor that binds to EGFR, ERBB4 and other EGF receptor family members. Potent mitogen for retinal pigment epithelial cells and vascular smooth muscle cells.
Cellular Location	[Betacellulin]: Secreted, extracellular space.
Tissue Location	Synthesized in several tissues and tumor cells. Predominantly expressed in pancreas and small intestine

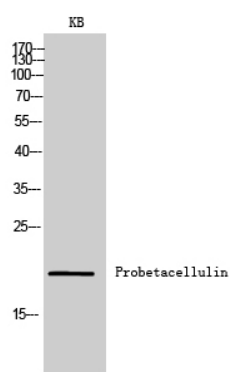
Background

Growth factor that binds to EGFR, ERBB4 and other EGF receptor family members. Potent mitogen for retinal pigment epithelial cells and vascular smooth muscle cells.

Images



Western Blot analysis of KB cells using Probetacellulin Polyclonal Antibody.. Secondary antibody was diluted at 1:20000



Western Blot analysis of KB cells using Probetacellulin Polyclonal Antibody. Secondary antibody was diluted at 1:20000

Please note: All products are 'FOR RESEARCH USE ONLY. NOT FOR USE IN DIAGNOSTIC OR THERAPEUTIC PROCEDURES'.