

CTSS Antibody (Center)

Purified Rabbit Polyclonal Antibody (Pab)

Catalog # AP7382c

Product Information

| | |
|--------------------------|------------------------|
| Application | WB, IHC-P, FC, E |
| Primary Accession | P25774 |
| Reactivity | Human |
| Host | Rabbit |
| Clonality | Polyclonal |
| Isotype | Rabbit IgG |
| Clone Names | RB19262 |
| Calculated MW | 37496 |
| Antigen Region | 210-240 |

Additional Information

| | |
|---------------------------|---|
| Gene ID | 1520 |
| Other Names | Cathepsin S, CTSS |
| Target/Specificity | This CTSS antibody is generated from rabbits immunized with a KLH conjugated synthetic peptide between 210-240 amino acids from the Central region of human CTSS. |
| Dilution | WB~~1:1000 IHC-P~~1:100~500 FC~~1:10~50 E~~Use at an assay dependent concentration. |
| Format | Purified polyclonal antibody supplied in PBS with 0.09% (W/V) sodium azide. This antibody is prepared by Saturated Ammonium Sulfate (SAS) precipitation followed by dialysis against PBS. |
| Storage | Maintain refrigerated at 2-8°C for up to 2 weeks. For long term storage store at -20°C in small aliquots to prevent freeze-thaw cycles. |
| Precautions | CTSS Antibody (Center) is for research use only and not for use in diagnostic or therapeutic procedures. |

Protein Information

| | |
|-----------------|--|
| Name | CTSS |
| Function | Thiol protease (PubMed: 30612035). Key protease responsible for the removal of the invariant chain from MHC class II molecules and MHC class II antigen presentation (PubMed: 30612035). The bond- specificity of this proteinase is in part similar to the specificities of cathepsin L |

(PubMed:[30612035](#)). Elicits itch by mediating cleavage and activation of MRGPRX1 (By similarity).

Cellular Location

Lysosome. Secreted. Cytoplasmic vesicle, phagosome

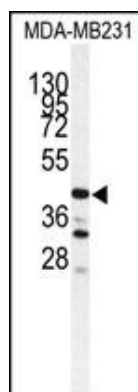
Background

The protein CTSS, a member of the peptidase C1 family, is a lysosomal cysteine proteinase that may participate in the degradation of antigenic proteins to peptides for presentation on MHC class II molecules. The protein can function as an elastase over a broad pH range in alveolar macrophages.

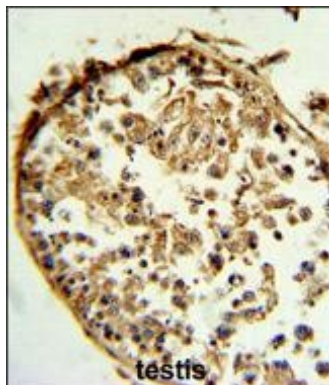
References

Lindahl,C., Cancer Genomics Proteomics 6 (3), 149-159 (2009)
Bunatova,K., Int. J. Biol. Markers 24 (1), 47-51 (2009)

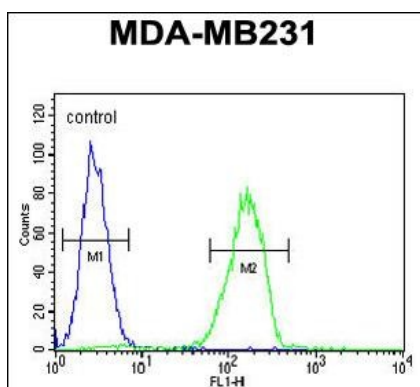
Images



Western blot analysis of CTSS antibody (Center) (Cat.# AP7382c) in MDA-MB231 cell line lysates (35ug/lane). CTSS (arrow) was detected using the purified Pab.



CTSS Antibody (Center) (Cat.# AP7382c) IHC analysis in formalin fixed and paraffin embedded human testis tissue followed by peroxidase conjugation of the secondary antibody and DAB staining. This data demonstrates the use of the CTSS Antibody (Center) for immunohistochemistry. Clinical relevance has not been evaluated.



CTSS Antibody (Center) (Cat. #AP7382c) flow cytometric analysis of MDA-MB231 cells (right histogram) compared to a negative control cell (left histogram).FITC-conjugated goat-anti-rabbit secondary antibodies were used for the analysis.

Please note: All products are 'FOR RESEARCH USE ONLY. NOT FOR USE IN DIAGNOSTIC OR THERAPEUTIC PROCEDURES'.