

GDF-7 Polyclonal Antibody

Catalog # AP73837

Product Information

Application	WB, IHC-P
Primary Accession	Q7Z4P5
Reactivity	Human, Mouse, Rat
Host	Rabbit
Clonality	Polyclonal
Calculated MW	46950

Additional Information

Gene ID	151449
Other Names	GDF7; Growth/differentiation factor 7; GDF-7
Dilution	WB~~Western Blot: 1/500 - 1/2000. IHC-p: 1:100-1:300. ELISA: 1/10000. Not yet tested in other applications. IHC-P~~Western Blot: 1/500 - 1/2000. IHC-p: 1:100-1:300. ELISA: 1/10000. Not yet tested in other applications.
Format	Liquid in PBS containing 50% glycerol, 0.5% BSA and 0.09% (W/V) sodium azide.
Storage Conditions	-20°C

Protein Information

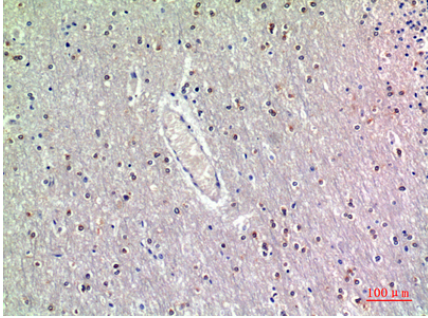
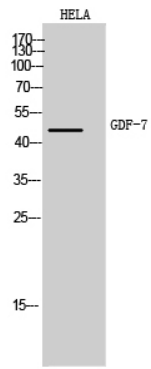
Name	GDF7
Function	May play an active role in the motor area of the primate neocortex.
Cellular Location	Secreted.

Background

May play an active role in the motor area of the primate neocortex.

Images

Western Blot analysis of Hela cells using GDF-7 Polyclonal Antibody. Antibody was diluted at 1:1000. Secondary antibody was diluted at 1:20000



Immunohistochemical analysis of paraffin-embedded human-brain, antibody was diluted at 1:200

Please note: All products are 'FOR RESEARCH USE ONLY. NOT FOR USE IN DIAGNOSTIC OR THERAPEUTIC PROCEDURES'.