

# Epigen Polyclonal Antibody

Catalog # AP73839

## Product Information

---

Application	WB
Primary Accession	<a href="#">Q6UW88</a>
Reactivity	Human
Host	Rabbit
Clonality	Polyclonal
Calculated MW	17091

## Additional Information

---

Gene ID	255324
Other Names	EPGN; Epigen; Epithelial mitogen; EPG
Dilution	WB~~Western Blot: 1/500 - 1/2000. ELISA: 1/10000. Not yet tested in other applications.
Format	Liquid in PBS containing 50% glycerol, 0.5% BSA and 0.09% (W/V) sodium azide.
Storage Conditions	-20°C

## Protein Information

---

Name	EPGN
Function	Promotes the growth of epithelial cells. May stimulate the phosphorylation of EGFR and mitogen-activated protein kinases.
Cellular Location	[Isoform 1]: Membrane; Single-pass type I membrane protein [Isoform 3]: Secreted. [Isoform 5]: Secreted.

## Background

---

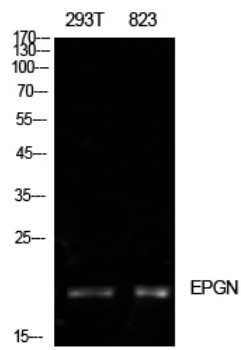
Promotes the growth of epithelial cells. May stimulate the phosphorylation of EGFR and mitogen-activated protein kinases.

## Images

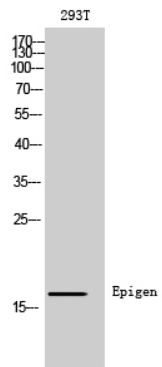
---

Western Blot analysis of 293T, 823 cells using Epigen Polyclonal Antibody. Antibody was diluted at 1:500.

Secondary antibody was diluted at 1:20000



Western Blot analysis of 293T cells using Epigen Polyclonal Antibody diluted at 1 : 500. Secondary antibody was diluted at 1:20000



Please note: All products are 'FOR RESEARCH USE ONLY. NOT FOR USE IN DIAGNOSTIC OR THERAPEUTIC PROCEDURES'.