

FKBP10 Antibody (C-term)

Purified Rabbit Polyclonal Antibody (Pab)

Catalog # AP7383b

Product Information

| | |
|-------------------|------------------------|
| Application | WB, IHC-P, FC, E |
| Primary Accession | Q96AY3 |
| Reactivity | Human |
| Host | Rabbit |
| Clonality | Polyclonal |
| Isotype | Rabbit IgG |
| Clone Names | RB19280 |
| Calculated MW | 64245 |
| Antigen Region | 552-580 |

Additional Information

| | |
|--------------------|---|
| Gene ID | 60681 |
| Other Names | Peptidyl-prolyl cis-trans isomerase FKBP10, PPIase FKBP10, 65 kDa FK506-binding protein, 65 kDa FKBP, FKBP-65, FK506-binding protein 10, FKBP-10, Immunophilin FKBP65, Rotamase, FKBP10, FKBP65 |
| Target/Specificity | This FKBP10 antibody is generated from rabbits immunized with a KLH conjugated synthetic peptide between 552-580 amino acids from the C-terminal region of human FKBP10. |
| Dilution | WB~~1:1000 IHC-P~~1:100 FC~~1:10~50 E~~Use at an assay dependent concentration. |
| Format | Purified polyclonal antibody supplied in PBS with 0.09% (W/V) sodium azide. This antibody is prepared by Saturated Ammonium Sulfate (SAS) precipitation followed by dialysis against PBS. |
| Storage | Maintain refrigerated at 2-8°C for up to 2 weeks. For long term storage store at -20°C in small aliquots to prevent freeze-thaw cycles. |
| Precautions | FKBP10 Antibody (C-term) is for research use only and not for use in diagnostic or therapeutic procedures. |

Protein Information

| | |
|----------|--------|
| Name | FKBP10 |
| Synonyms | FKBP65 |

| | |
|--------------------------|---|
| Function | PPIases accelerate the folding of proteins during protein synthesis. |
| Cellular Location | Endoplasmic reticulum lumen {ECO:0000255 PROSITE- ProRule:PRU10138} |

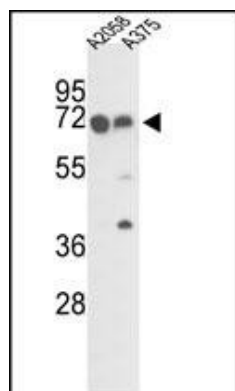
Background

The protein belongs to the FKBP-type peptidyl-prolyl cis/trans isomerase family. It is located in endoplasmic reticulum and acts as molecular chaperones.

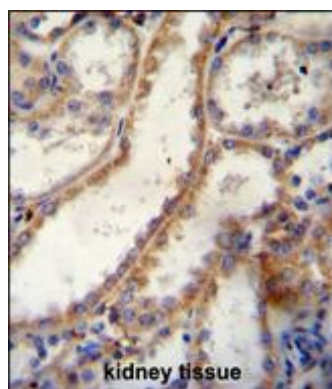
References

Ishikawa,Y., J. Biol. Chem. 283 (46), 31584-31590 (2008)
 Foster,L.J., J. Proteome Res. 5 (1), 64-75 (2006)
 Zhang,H., Nat. Biotechnol. 21 (6), 660-666 (2003)

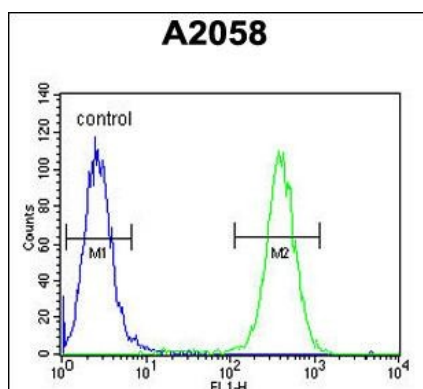
Images



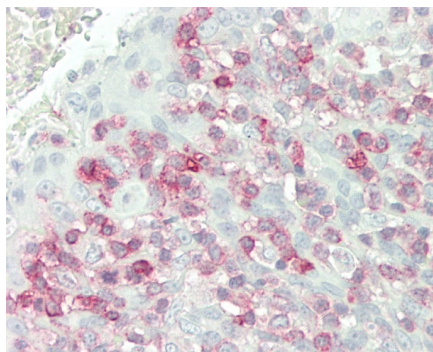
Western blot analysis of FKBP10 Antibody (C-term) (Cat.# AP7383b) in A2058 and A375 cell line lysates (35ug/lane). FKBP10 (arrow) was detected using the purified Pab.



FKBP10 Antibody (C-term) (Cat. #AP7383B)immunohistochemistry analysis in formalin fixed and paraffin embedded human kidney tissue followed by peroxidase conjugation of the secondary antibody and DAB staining.This data demonstrates the use of FKBP10 Antibody (C-term) for immunohistochemistry. Clinical relevance has not been evaluated.



FKBP10 Antibody (C-term) (Cat. #AP7383b) flow cytometric analysis of A2058 cells (right histogram) compared to a negative control cell (left histogram).FITC-conjugated goat-anti-rabbit secondary antibodies were used for the analysis.



Formalin-fixed and paraffin-embedded H. tonsil tissue reacted with FKBP10 Antibody (C-term) (Cat#AP7383b).

Please note: All products are 'FOR RESEARCH USE ONLY. NOT FOR USE IN DIAGNOSTIC OR THERAPEUTIC PROCEDURES'.