

# SEC22B Polyclonal Antibody

Catalog # AP73863

## Product Information

Application	WB, IHC-P
Primary Accession	<a href="#">O75396</a>
Reactivity	Human, Mouse, Rat
Host	Rabbit
Clonality	Polyclonal
Calculated MW	24741

## Additional Information

Gene ID	9554
Other Names	SEC22B; SEC22L1; Vesicle-trafficking protein SEC22b; ER-Golgi SNARE of 24 kDa; ERS-24; ERS24; SEC22 vesicle-trafficking protein homolog B; SEC22 vesicle-trafficking protein-like 1
Dilution	WB~~Western Blot: 1/500 - 1/2000. IHC-p: 1:100-1:300. ELISA: 1/10000. Not yet tested in other applications. IHC-P~~N/A
Format	Liquid in PBS containing 50% glycerol, 0.5% BSA and 0.09% (W/V) sodium azide.
Storage Conditions	-20°C

## Protein Information

Name	SEC22B
Synonyms	SEC22L1
Function	SNARE involved in targeting and fusion of ER-derived transport vesicles with the Golgi complex as well as Golgi-derived retrograde transport vesicles with the ER.
Cellular Location	Endoplasmic reticulum membrane {ECO:0000250 UniProtKB:Q4KM74}; Single-pass type IV membrane protein {ECO:0000250 UniProtKB:Q4KM74}. Endoplasmic reticulum-Golgi intermediate compartment membrane {ECO:0000250 UniProtKB:Q4KM74}. Golgi apparatus, cis-Golgi network membrane {ECO:0000250 UniProtKB:Q4KM74} Golgi apparatus, trans-Golgi network membrane {ECO:0000250 UniProtKB:Q4KM74}. Melanosome. Note=Concentrated most in the intermediate compartment/cis-Golgi network and the cis-Golgi cisternae 1 and 2. Greatly reduced in concentration at the trans end of the Golgi apparatus (By similarity). Identified by mass spectrometry in melanosome fractions from stage I to stage IV

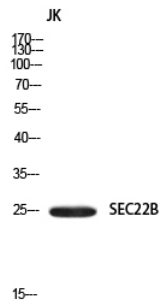
## Background

---

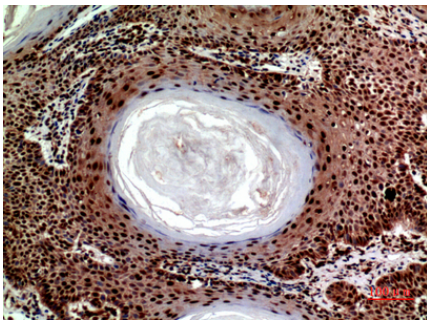
SNARE involved in targeting and fusion of ER-derived transport vesicles with the Golgi complex as well as Golgi-derived retrograde transport vesicles with the ER.

## Images

---



Western blot analysis of JK using SEC22B antibody..  
Secondary antibody was diluted at 1:20000



Immunohistochemical analysis of paraffin-embedded  
human-skin, antibody was diluted at 1:100

Please note: All products are 'FOR RESEARCH USE ONLY. NOT FOR USE IN DIAGNOSTIC OR THERAPEUTIC PROCEDURES'.