

# Endoglycan Polyclonal Antibody

Catalog # AP73867

## Product Information

---

Application	WB
Primary Accession	<a href="#">Q9NZ53</a>
Reactivity	Human
Host	Rabbit
Clonality	Polyclonal
Calculated MW	65076

## Additional Information

---

Gene ID	50512
Other Names	PODXL2; Podocalyxin-like protein 2; Endoglycan
Dilution	WB~~Western Blot: 1/500 - 1/2000. ELISA: 1/10000. Not yet tested in other applications.
Format	Liquid in PBS containing 50% glycerol, 0.5% BSA and 0.09% (W/V) sodium azide.
Storage Conditions	-20°C

## Protein Information

---

Name	PODXL2
Function	Acts as a ligand for vascular selectins. Mediates rapid rolling of leukocytes over vascular surfaces through high affinity divalent cation-dependent interactions with E-, P- and L-selectins.
Cellular Location	Membrane; Single-pass type I membrane protein
Tissue Location	Expressed in T-cells, B-cells and monocytes. Expression is higher on memory and germinal center cells than on naive B-cells (at protein level). Highly expressed in brain. Moderately expressed in pancreas, kidney and lymphoid node. Weakly expressed in liver. Detected in both endothelial cells and CD34+ bone marrow cells

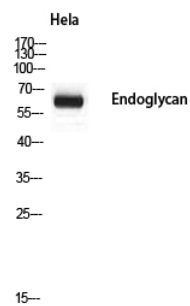
## Background

---

Acts as a ligand for vascular selectins. Mediates rapid rolling of leukocytes over vascular surfaces through high affinity divalent cation-dependent interactions with E-, P- and L- selectins.

# Images

---



Western blot analysis of Hela using Endoglycan antibody..  
Secondary antibody was diluted at 1:20000

Please note: All products are 'FOR RESEARCH USE ONLY. NOT FOR USE IN DIAGNOSTIC OR THERAPEUTIC PROCEDURES'.