

# Cathepsin B Polyclonal Antibody

Catalog # AP73880

## Product Information

Application	WB
Primary Accession	<a href="#">P07858</a>
Reactivity	Human, Mouse, Rat
Host	Rabbit
Clonality	Polyclonal
Calculated MW	37822

## Additional Information

Gene ID	1508
Other Names	CTSB; CPSB; Cathepsin B; APP secretase; APPS; Cathepsin B1
Dilution	WB~~Western Blot: 1/500 - 1/2000. ELISA: 1/10000. Not yet tested in other applications.
Format	Liquid in PBS containing 50% glycerol, 0.5% BSA and 0.09% (W/V) sodium azide.
Storage Conditions	-20°C

## Protein Information

Name	CTSB
Synonyms	CPSB
Function	Thiol protease which is believed to participate in intracellular degradation and turnover of proteins (PubMed: <a href="#">12220505</a> ). Cleaves matrix extracellular phosphoglycoprotein MEPE (PubMed: <a href="#">12220505</a> ). Involved in the solubilization of cross-linked TG/thyroglobulin in the thyroid follicle lumen (By similarity). Has also been implicated in tumor invasion and metastasis (PubMed: <a href="#">3972105</a> ).
Cellular Location	Lysosome. Melanosome. Secreted, extracellular space {ECO:0000250 UniProtKB:A1E295}. Apical cell membrane {ECO:0000250 UniProtKB:P10605}; Peripheral membrane protein {ECO:0000250 UniProtKB:P10605}; Extracellular side {ECO:0000250 UniProtKB:P10605}. Note=Identified by mass spectrometry in melanosome fractions from stage I to stage IV (PubMed:17081065) Localizes to the lumen of thyroid follicles and to the apical membrane of thyroid epithelial cells (By similarity) {ECO:0000250 UniProtKB:P10605, ECO:0000269 PubMed:17081065}

**Tissue Location**

Expressed in the stratum spinosum of the epidermis. Weak expression is detected in the stratum granulosum

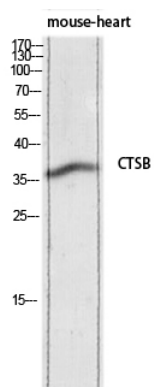
**Background**

---

Thiol protease which is believed to participate in intracellular degradation and turnover of proteins (PubMed:[12220505](#)). Cleaves matrix extracellular phosphoglycoprotein MEPE (PubMed:[12220505](#)). Has also been implicated in tumor invasion and metastasis (PubMed:[3972105](#)).

**Images**

---



Western blot analysis of mouse-heart lysis using CTSB antibody. Antibody was diluted at 1:1000. Secondary antibody was diluted at 1:20000

Please note: All products are 'FOR RESEARCH USE ONLY. NOT FOR USE IN DIAGNOSTIC OR THERAPEUTIC PROCEDURES'.