

CD107b Polyclonal Antibody

Catalog # AP73894

Product Information

Application	WB, IHC-P
Primary Accession	P13473
Reactivity	Human
Host	Rabbit
Clonality	Polyclonal
Calculated MW	44961

Additional Information

Gene ID	3920
Other Names	LAMP2; Lysosome-associated membrane glycoprotein 2; LAMP-2; Lysosome-associated membrane protein 2; CD107 antigen-like family member B; CD107b
Dilution	WB~~Western Blot: 1/500 - 1/2000. IHC-p: 1:100-1:300. ELISA: 1/10000. Not yet tested in other applications. IHC-P~~Western Blot: 1/500 - 1/2000. IHC-p: 1:100-1:300. ELISA: 1/10000. Not yet tested in other applications.
Format	Liquid in PBS containing 50% glycerol, 0.5% BSA and 0.09% (W/V) sodium azide.
Storage Conditions	-20°C

Protein Information

Name	LAMP2
Function	Lysosomal membrane glycoprotein which plays an important role in lysosome biogenesis, lysosomal pH regulation and autophagy (PubMed: 11082038 , PubMed: 18644871 , PubMed: 24880125 , PubMed: 27628032 , PubMed: 36586411 , PubMed: 37390818 , PubMed: 8662539). Acts as an important regulator of lysosomal lumen pH regulation by acting as a direct inhibitor of the proton channel TMEM175, facilitating lysosomal acidification for optimal hydrolase activity (PubMed: 37390818). Plays an important role in chaperone-mediated autophagy, a process that mediates lysosomal degradation of proteins in response to various stresses and as part of the normal turnover of proteins with a long biological half-life (PubMed: 11082038 , PubMed: 18644871 , PubMed: 24880125 , PubMed: 27628032 , PubMed: 36586411 , PubMed: 8662539). Functions by binding target proteins, such as GAPDH, NLRP3 and MLLT11, and targeting them for lysosomal degradation (PubMed: 11082038 , PubMed: 18644871 , PubMed: 24880125 ,

PubMed:[36586411](#), PubMed:[8662539](#)). In the chaperone-mediated autophagy, acts downstream of chaperones, such as HSPA8/HSC70, which recognize and bind substrate proteins and mediate their recruitment to lysosomes, where target proteins bind LAMP2 (PubMed:[36586411](#)). Plays a role in lysosomal protein degradation in response to starvation (By similarity). Required for the fusion of autophagosomes with lysosomes during autophagy (PubMed:[27628032](#)). Cells that lack LAMP2 express normal levels of VAMP8, but fail to accumulate STX17 on autophagosomes, which is the most likely explanation for the lack of fusion between autophagosomes and lysosomes (PubMed:[27628032](#)). Required for normal degradation of the contents of autophagosomes (PubMed:[27628032](#)). Required for efficient MHC class II-mediated presentation of exogenous antigens via its function in lysosomal protein degradation; antigenic peptides generated by proteases in the endosomal/lysosomal compartment are captured by nascent MHC II subunits (PubMed:[15894275](#), PubMed:[20518820](#)). Is not required for efficient MHC class II-mediated presentation of endogenous antigens (PubMed:[20518820](#)).

Cellular Location

Lysosome membrane {ECO:0000255|PROSITE- ProRule:PRU00740, ECO:0000269|PubMed:11082038, ECO:0000269|PubMed:17897319, ECO:0000269|PubMed:18644871, ECO:0000269|PubMed:2912382}; Single-pass type I membrane protein {ECO:0000255|PROSITE-ProRule:PRU00740, ECO:0000269|PubMed:17897319} Endosome membrane; Single-pass type I membrane protein {ECO:0000255|PROSITE-ProRule:PRU00740, ECO:0000269|PubMed:17897319}. Cell membrane; Single-pass type I membrane protein {ECO:0000255|PROSITE-ProRule:PRU00740, ECO:0000269|PubMed:17897319}. Cytoplasmic vesicle, autophagosome membrane {ECO:0000250|UniProtKB:P17047}. Note=This protein shuttles between lysosomes, endosomes, and the plasma membrane

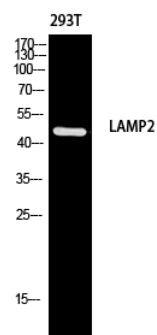
Tissue Location

Isoform LAMP-2A is highly expressed in placenta, lung and liver, less in kidney and pancreas, low in brain and skeletal muscle (PubMed:26856698, PubMed:7488019). Isoform LAMP-2B is detected in spleen, thymus, prostate, testis, small intestine, colon, skeletal muscle, brain, placenta, lung, kidney, ovary and pancreas and liver (PubMed:26856698, PubMed:7488019). Isoform LAMP-2C is detected in small intestine, colon, heart, brain, skeletal muscle, and at lower levels in kidney and placenta (PubMed:26856698).

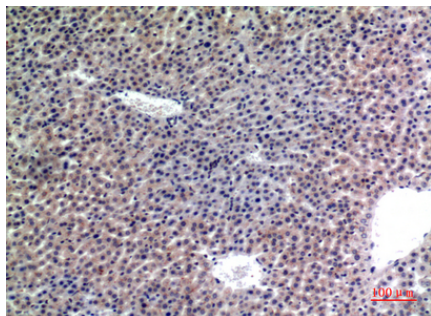
Background

Plays an important role in chaperone-mediated autophagy, a process that mediates lysosomal degradation of proteins in response to various stresses and as part of the normal turnover of proteins with a long biological half-life (PubMed:[8662539](#), PubMed:[11082038](#), PubMed:[18644871](#), PubMed:[24880125](#), PubMed:[27628032](#)). Functions by binding target proteins, such as GAPDH and MLLT11, and targeting them for lysosomal degradation (PubMed:[8662539](#), PubMed:[11082038](#), PubMed:[18644871](#), PubMed:[24880125](#)). Plays a role in lysosomal protein degradation in response to starvation (By similarity). Required for the fusion of autophagosomes with lysosomes during autophagy (PubMed:[27628032](#)). Cells that lack LAMP2 express normal levels of VAMP8, but fail to accumulate STX17 on autophagosomes, which is the most likely explanation for the lack of fusion between autophagosomes and lysosomes (PubMed:[27628032](#)). Required for normal degradation of the contents of autophagosomes (PubMed:[27628032](#)). Required for efficient MHCII-mediated presentation of exogenous antigens via its function in lysosomal protein degradation; antigenic peptides generated by proteases in the endosomal/lysosomal compartment are captured by nascent MHCII subunits (PubMed:[20518820](#)). Is not required for efficient MHCII-mediated presentation of endogenous antigens (PubMed:[20518820](#)).

Images



Western blot analysis of 293T using LAMP2 antibody.
Antibody was diluted at 1:1000. Secondary antibody was
diluted at 1:20000



Immunohistochemical analysis of paraffin-embedded
mouse-liver, antibody was diluted at 1:100

Please note: All products are 'FOR RESEARCH USE ONLY. NOT FOR USE IN DIAGNOSTIC OR THERAPEUTIC PROCEDURES'.