

CD296 Polyclonal Antibody

Catalog # AP73900

Product Information

Application	WB, E
Primary Accession	P52961
Reactivity	Human, Mouse, Rat
Host	Rabbit
Clonality	Polyclonal
Calculated MW	36335

Additional Information

Gene ID	417
Other Names	ART1; GPI-linked NAD(P)(+)-arginine ADP-ribosyltransferase 1; ADP-ribosyltransferase C2 and C3 toxin-like 1; ARTC1; Mono(ADP-ribosyl)transferase 1; CD296
Dilution	WB~~Western Blot: 1/500 - 1/2000. ELISA: 1/10000. Not yet tested in other applications. E~~N/A
Format	Liquid in PBS containing 50% glycerol, 0.5% BSA and 0.09% (W/V) sodium azide.
Storage Conditions	-20°C

Protein Information

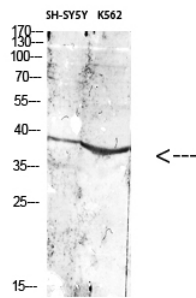
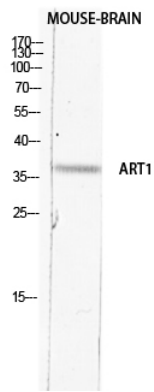
Name	ART1
Function	Has ADP-ribosyltransferase activity toward GLP1R.
Cellular Location	Sarcoplasmic reticulum membrane; Lipid-anchor, GPI-anchor

Background

Has ADP-ribosyltransferase activity toward GLP1R.

Images

Western blot analysis of MOUSE-BRAIN lysis using ART1 antibody. Antibody was diluted at 1:2000. Secondary antibody was diluted at 1:20000



Western Blot analysis of various cells using Antibody diluted at 1:1000. Secondary antibody was diluted at 1:20000

Please note: All products are 'FOR RESEARCH USE ONLY. NOT FOR USE IN DIAGNOSTIC OR THERAPEUTIC PROCEDURES'.