

TECPR1 Antibody (C-term)

Purified Rabbit Polyclonal Antibody (Pab)

Catalog # AP7391b

Product Information

Application	IHC-P, FC, WB, E
Primary Accession	Q7Z6L1
Reactivity	Human
Host	Rabbit
Clonality	Polyclonal
Isotype	Rabbit IgG
Clone Names	RB18189
Calculated MW	129696
Antigen Region	1094-1122

Additional Information

Gene ID	25851
Other Names	Tectonin beta-propeller repeat-containing protein 1, TECPR1, KIAA1358
Target/Specificity	This TECPR1 antibody is generated from rabbits immunized with a KLH conjugated synthetic peptide between 1094-1122 amino acids from the C-terminal region of human TECPR1.
Dilution	IHC-P~~1:100~500 FC~~1:10~50 WB~~1:1000 E~~Use at an assay dependent concentration.
Format	Purified polyclonal antibody supplied in PBS with 0.05% (V/V) Proclin 300. This antibody is purified through a protein A column, followed by peptide affinity purification.
Storage	Maintain refrigerated at 2-8°C for up to 2 weeks. For long term storage store at -20°C in small aliquots to prevent freeze-thaw cycles.
Precautions	TECPR1 Antibody (C-term) is for research use only and not for use in diagnostic or therapeutic procedures.

Protein Information

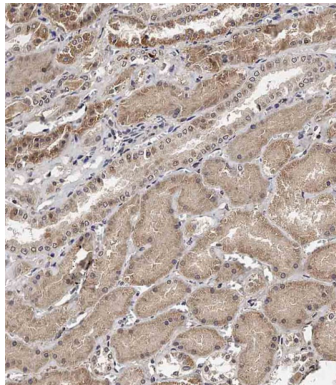
Name	TECPR1
Synonyms	KIAA1358
Function	Tethering factor involved in autophagy. Involved in autophagosome maturation by promoting the autophagosome fusion with lysosomes: acts by

associating with both the ATG5-ATG12 conjugate and phosphatidylinositol-3-phosphate (PtdIns(3)P) present at the surface of autophagosomes. Also involved in selective autophagy against bacterial pathogens, by being required for phagophore/preautophagosomal structure biogenesis and maturation.

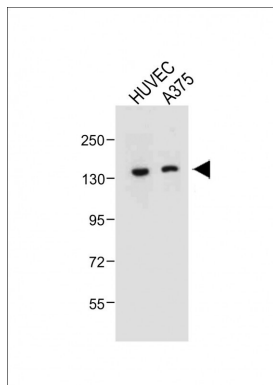
Cellular Location

Cytoplasmic vesicle, autophagosome membrane. Lysosome membrane. Note=Localizes to Lysosome membranes, and binds PtdIns(3)P at the surface of autophagosome. Localizes to autolysosomes, a vesicle formed by the fusion between autophagosomes and lysosomes

Images



Immunohistochemical analysis of AP7391b on paraffin-embedded Human kidney tissue. Tissue was fixed with formaldehyde at room temperature. Heat induced epitope retrieval was performed by EDTA buffer (pH9. 0). Samples were incubated with primary antibody(1:100) for 1 hour at room temperature. Undiluted CRF Anti-Polyvalent HRP Polymer antibody was used as the secondary antibody.



All lanes : Anti-TECPR1 Antibody (C-term) at 1:500 dilution
Lane 1: HUVEC whole cell lysate Lane 2: A375 whole cell lysate
Lysates/proteins at 20 µg per lane. Secondary Goat Anti-Rabbit IgG, (H+L), Peroxidase conjugated at 1/10000 dilution. Predicted band size : 130 kDa
Blocking/Dilution buffer: 5% NFDM/TBST.

Please note: All products are 'FOR RESEARCH USE ONLY. NOT FOR USE IN DIAGNOSTIC OR THERAPEUTIC PROCEDURES'.