

K-Ras Polyclonal Antibody

Catalog # AP73922

Product Information

Application	WB, IHC-P
Primary Accession	P01116
Reactivity	Human, Mouse, Rat
Host	Rabbit
Clonality	Polyclonal
Calculated MW	21656

Additional Information

Gene ID	3845
Other Names	GTPase KRas (K-Ras 2) (Ki-Ras) (c-K-ras) (c-Ki-ras) [Cleaved into: GTPase KRas, N-terminally processed]
Dilution	WB~~1:1000 IHC-P~~N/A
Format	Liquid in PBS containing 50% glycerol, 0.5% BSA and 0.09% (W/V) sodium azide.
Storage Conditions	-20°C

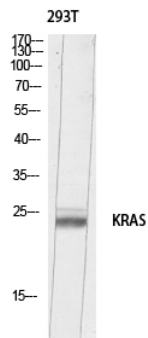
Protein Information

Name	KRAS
Synonyms	KRAS2, RASK2
Function	Ras proteins bind GDP/GTP and possess intrinsic GTPase activity (PubMed: 20949621 , PubMed: 39809765). Plays an important role in the regulation of cell proliferation (PubMed: 22711838 , PubMed: 23698361). Plays a role in promoting oncogenic events by inducing transcriptional silencing of tumor suppressor genes (TSGs) in colorectal cancer (CRC) cells in a ZNF304-dependent manner (PubMed: 24623306).
Cellular Location	Cell membrane; Lipid-anchor; Cytoplasmic side. Endomembrane system. Cytoplasm, cytosol

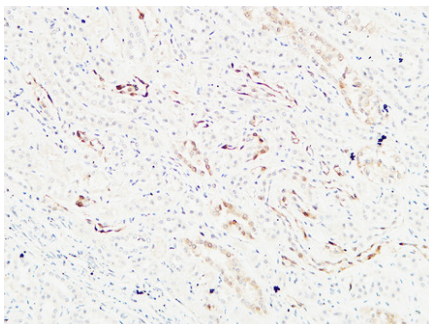
Background

Ras proteins bind GDP/GTP and possess intrinsic GTPase activity. Plays an important role in the regulation of cell proliferation (PubMed:[23698361](#), PubMed:[22711838](#)). Plays a role in promoting oncogenic events by inducing transcriptional silencing of tumor suppressor genes (TSGs) in colorectal cancer (CRC) cells in a

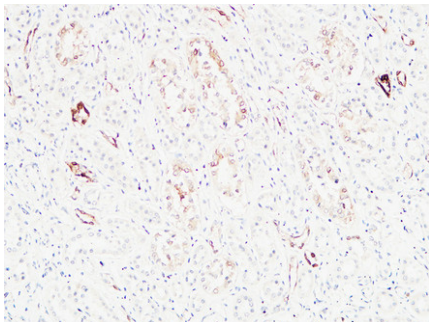
Images



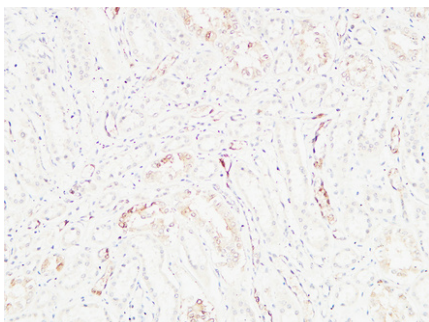
Western blot analysis of 293T lysis using KRAS antibody. Antibody was diluted at 1:500. Secondary antibody was diluted at 1:20000



Immunohistochemical analysis of paraffin-embedded Human kidney. 1, Antibody was diluted at 1:200(4°,overnight). 2, High-pressure and temperature EDTA, pH8.0 was used for antigen retrieval. 3,Secondary antibody was diluted at 1:200(room temperature, 30min).



Immunohistochemical analysis of paraffin-embedded Human kidney. 1, Antibody was diluted at 1:200(4°,overnight). 2, High-pressure and temperature EDTA, pH8.0 was used for antigen retrieval. 3,Secondary antibody was diluted at 1:200(room temperature, 30min).



Immunohistochemical analysis of paraffin-embedded Human kidney. 1, Antibody was diluted at 1:200(4°,overnight). 2, High-pressure and temperature EDTA, pH8.0 was used for antigen retrieval. 3,Secondary antibody was diluted at 1:200(room temperature, 30min).

Please note: All products are 'FOR RESEARCH USE ONLY. NOT FOR USE IN DIAGNOSTIC OR THERAPEUTIC PROCEDURES'.