

CD238 Polyclonal Antibody

Catalog # AP73931

Product Information

Application	WB, E
Primary Accession	P23276
Reactivity	Human, Rat, Mouse
Host	Rabbit
Clonality	Polyclonal
Calculated MW	82824

Additional Information

Gene ID	3792
Other Names	Kell blood group, metallo-endopeptidase
Dilution	WB~~WB 1:500-2000, ELISA 1:10000-20000 E~~N/A
Format	Liquid in PBS containing 50% glycerol, 0.5% BSA and 0.09% (W/V) sodium azide.
Storage Conditions	-20°C

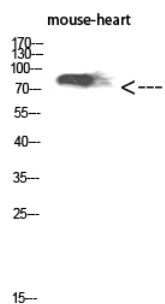
Protein Information

Name	KEL
Function	Zinc endopeptidase with endothelin-3-converting enzyme activity. Cleaves EDN1, EDN2 and EDN3, with a marked preference for EDN3.
Cellular Location	Cell membrane; Single-pass type II membrane protein. Note=Spans the erythrocyte membrane, and is attached to the underlying cytoskeleton
Tissue Location	Expressed at high levels in erythrocytes and testis (in Sertoli cells), and, at lower levels, in skeletal muscle, tonsils (in follicular dendritic cells), lymph node, spleen and appendix (at protein level). Also expressed in many adult and fetal nonerythroid tissues, including brain, spleen, lymph nodes and bone marrow

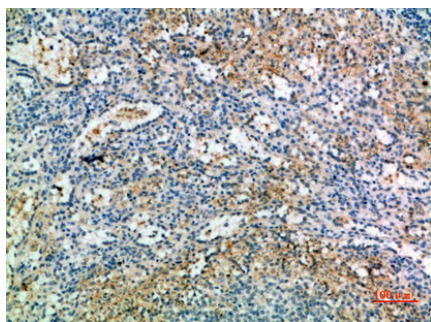
Background

Zinc endopeptidase with endothelin-3-converting enzyme activity. Cleaves EDN1, EDN2 and EDN3, with a marked preference for EDN3.

Images



Western Blot analysis of mouse-heart cells using CD238 Polyclonal Antibody diluted at 1:1000. Secondary antibody was diluted at 1:20000



Immunohistochemical analysis of paraffin-embedded human-spleen, antibody was diluted at 1:200

Please note: All products are 'FOR RESEARCH USE ONLY. NOT FOR USE IN DIAGNOSTIC OR THERAPEUTIC PROCEDURES'.