

Bcl-2 Polyclonal Antibody

Catalog # AP73939

Product Information

Application	WB, IHC-P
Primary Accession	P10415
Reactivity	Mouse, Rat
Host	Rabbit
Clonality	Polyclonal
Calculated MW	26266

Additional Information

Gene ID	596
Other Names	B-cell CLL/lymphoma 2
Dilution	WB~~WB 1:500-2000, ELISA 1:10000-20000 IHC 1:50-300 IHC-P~~N/A
Format	Liquid in PBS containing 50% glycerol, 0.5% BSA and 0.09% (W/V) sodium azide.
Storage Conditions	-20°C

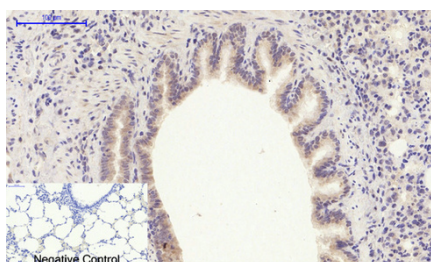
Protein Information

Name	BCL2
Function	Suppresses apoptosis in a variety of cell systems including factor-dependent lymphohematopoietic and neural cells (PubMed: 1508712 , PubMed: 8183370). Regulates cell death by controlling the mitochondrial membrane permeability (PubMed: 11368354). Appears to function in a feedback loop system with caspases (PubMed: 11368354). Inhibits caspase activity either by preventing the release of cytochrome c from the mitochondria and/or by binding to the apoptosis-activating factor (APAF-1) (PubMed: 11368354). Also acts as an inhibitor of autophagy: interacts with BECN1 and AMBRA1 during non-starvation conditions and inhibits their autophagy function (PubMed: 18570871 , PubMed: 20889974 , PubMed: 21358617). May attenuate inflammation by impairing NLRP1- inflammasome activation, hence CASP1 activation and IL1B release (PubMed: 17418785).
Cellular Location	Mitochondrion outer membrane; Single-pass membrane protein. Nucleus membrane; Single-pass membrane protein. Endoplasmic reticulum membrane; Single-pass membrane protein. Cytoplasm {ECO:0000250 UniProtKB:P10417}
Tissue Location	Expressed in a variety of tissues.

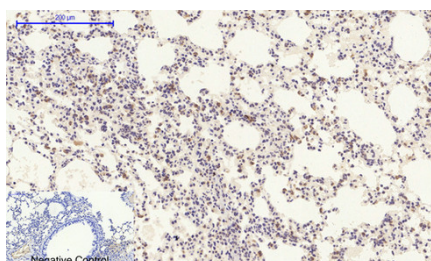
Background

Suppresses apoptosis in a variety of cell systems including factor-dependent lymphohematopoietic and neural cells. Regulates cell death by controlling the mitochondrial membrane permeability. Appears to function in a feedback loop system with caspases. Inhibits caspase activity either by preventing the release of cytochrome c from the mitochondria and/or by binding to the apoptosis-activating factor (APAF-1). May attenuate inflammation by impairing NLRP1-inflammasome activation, hence CASP1 activation and IL1B release (PubMed:[17418785](#)).

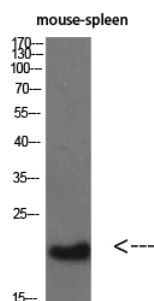
Images



Immunohistochemical analysis of paraffin-embedded Rat-lung tissue. 1,Bcl-2 Polyclonal Antibody was diluted at 1:200(4°C,overnight). 2, Sodium citrate pH 6.0 was used for antibody retrieval(>98°C,20min). 3,Secondary antibody was diluted at 1:200(room tempeRature, 30min). Negative control was used by secondary antibody only.



Immunohistochemical analysis of paraffin-embedded Mouse-lung tissue. 1,Bcl-2 Polyclonal Antibody was diluted at 1:200(4°C,overnight). 2, Sodium citrate pH 6.0 was used for antibody retrieval(>98°C,20min). 3,Secondary antibody was diluted at 1:200(room tempeRature, 30min). Negative control was used by secondary antibody only.



Western Blot analysis of mouse-spleen cells using Bcl-2 Polyclonal Antibody diluted at 1:500. Secondary antibody was diluted at 1:20000

Please note: All products are 'FOR RESEARCH USE ONLY. NOT FOR USE IN DIAGNOSTIC OR THERAPEUTIC PROCEDURES'.