

# Collagen IV Polyclonal Antibody

Catalog # AP73951

## Product Information

---

<b>Application</b>	WB
<b>Primary Accession</b>	<a href="#">P02462</a>
<b>Reactivity</b>	Human, Mouse, Rat
<b>Host</b>	Rabbit
<b>Clonality</b>	Polyclonal
<b>Calculated MW</b>	160611

## Additional Information

---

<b>Gene ID</b>	1282
<b>Other Names</b>	collagen, type IV, alpha 1
<b>Dilution</b>	WB~~WB 1:500-2000, ELISA 1:10000-20000
<b>Format</b>	Liquid in PBS containing 50% glycerol, 0.5% BSA and 0.09% (W/V) sodium azide.
<b>Storage Conditions</b>	-20°C

## Protein Information

---

<b>Name</b>	COL4A1 ( <a href="#">HGNC:2202</a> )
<b>Function</b>	Type IV collagen is the major structural component of glomerular basement membranes (GBM), forming a 'chicken-wire' meshwork together with laminins, proteoglycans and entactin/nidogen.
<b>Cellular Location</b>	Secreted, extracellular space, extracellular matrix, basement membrane {ECO:0000250 UniProtKB:P02463}
<b>Tissue Location</b>	Highly expressed in placenta.

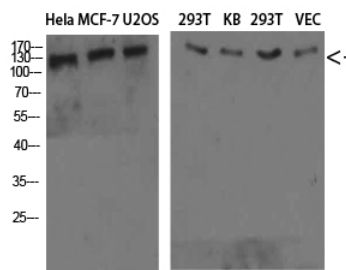
## Background

---

Type IV collagen is the major structural component of glomerular basement membranes (GBM), forming a 'chicken-wire' meshwork together with laminins, proteoglycans and entactin/nidogen.

## Images

---



Western Blot analysis of HeLa MCF-7 U2OS 293T KB 293T VEC cells using Collagen IV Polyclonal Antibody diluted at 1:800. Secondary antibody was diluted at 1:20000

Please note: All products are 'FOR RESEARCH USE ONLY. NOT FOR USE IN DIAGNOSTIC OR THERAPEUTIC PROCEDURES'.