

MIA2 Polyclonal Antibody

Catalog # AP73962

Product Information

Application	WB
Primary Accession	Q96PC5
Reactivity	Human
Host	Rabbit
Clonality	Polyclonal
Calculated MW	159836

Additional Information

Gene ID	4253
Other Names	Melanoma inhibitory activity protein 2
Dilution	WB~~WB 1:500-2000, ELISA 1:10000-20000
Format	Liquid in PBS containing 50% glycerol, 0.5% BSA and 0.09% (W/V) sodium azide.
Storage Conditions	-20°C

Protein Information

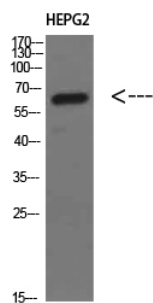
Name	MIA2 (HGNC:18432)
Function	Plays a role in the transport of cargos that are too large to fit into COPII-coated vesicles and require specific mechanisms to be incorporated into membrane-bound carriers and exported from the endoplasmic reticulum (PubMed: 21525241 , PubMed: 25202031 , PubMed: 27138255 , PubMed: 27170179). Plays a role in the secretion of lipoproteins, pre-chylomicrons and pre-VLDLs, by participating in their export from the endoplasmic reticulum (PubMed: 27138255). Thereby, may play a role in cholesterol and triglyceride homeostasis (By similarity). Required for collagen VII (COL7A1) secretion by loading COL7A1 into transport carriers and recruiting PREB/SEC12 at the endoplasmic reticulum exit sites (PubMed: 21525241 , PubMed: 25202031 , PubMed: 27170179).
Cellular Location	Endoplasmic reticulum membrane; Single-pass membrane protein. Note=Localizes to endoplasmic reticulum exit sites (ERES), also known as transitional endoplasmic reticulum (tER).
Tissue Location	Highly expressed in liver and weakly in testis. Expression was higher in patients with severe fibrosis or inflammation and chronic hepatitis (PubMed:12586826). Isoform 1 is specifically expressed in lung, testis, small

intestine, colon, pancreas, kidney, liver and prostate (PubMed:27138255). Isoform 8 is expressed only in testis (at the protein level). Isoform 8 (at protein level) and isoform 9 are expressed in cutaneous T-cell lymphoma (CTCL) cell lines, colorectal carcinomas, breast carcinomas and melanoma. Isoform 9, but not isoform 5A, is expressed in head and neck squamous cell carcinoma (PubMed:12839582).

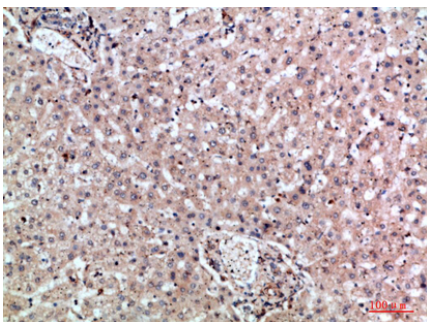
Background

Plays a role in the transport of cargos that are too large to fit into COPII-coated vesicles and require specific mechanisms to be incorporated into membrane-bound carriers and exported from the endoplasmic reticulum (PubMed:27138255, PubMed:21525241, PubMed:25202031, PubMed:27170179). Plays a role in the secretion of lipoproteins, pre-chylomicrons and pre-VLDLs, by participating in their export from the endoplasmic reticulum (PubMed:27138255). Thereby, may play a role in cholesterol and triglyceride homeostasis (By similarity). Required for collagen VII (COL7A1) secretion by loading COL7A1 into transport carriers and recruiting PREB/SEC12 at the endoplasmic reticulum exit sites (PubMed:21525241, PubMed:25202031, PubMed:27170179).

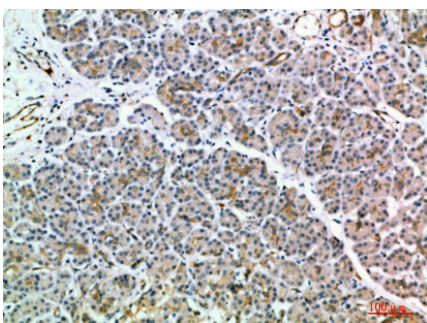
Images



Western Blot analysis of HEPG2 cells using MIA2 Polyclonal Antibody diluted at 1:500. Secondary antibody was diluted at 1:20000

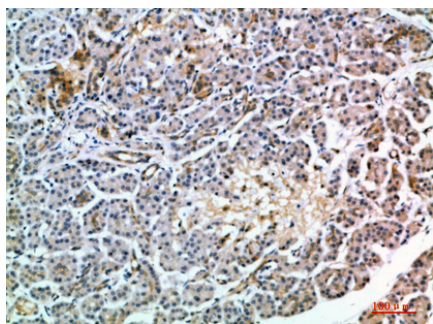


Immunohistochemical analysis of paraffin-embedded human-liver, antibody was diluted at 1:200



Immunohistochemical analysis of paraffin-embedded human-pancreas, antibody was diluted at 1:200

Immunohistochemical analysis of paraffin-embedded human-pancreas, antibody was diluted at 1:200



Please note: All products are 'FOR RESEARCH USE ONLY. NOT FOR USE IN DIAGNOSTIC OR THERAPEUTIC PROCEDURES'.