

# CYFIP2 Polyclonal Antibody

Catalog # AP73965

## Product Information

Application	WB
Primary Accession	<a href="#">Q96F07</a>
Reactivity	Human, Mouse, Rat
Host	Rabbit
Clonality	Polyclonal
Calculated MW	148399

## Additional Information

Gene ID	26999
Other Names	Cytoplasmic FMR1-interacting protein 2 (p53-inducible protein 121)
Dilution	WB~~WB 1:500-2000, ELISA 1:10000-20000
Format	Liquid in PBS containing 50% glycerol, 0.5% BSA and 0.09% (W/V) sodium azide.
Storage Conditions	-20°C

## Protein Information

Name	CYFIP2 {ECO:0000312   EMBL:AAH11762.1}
Function	Involved in T-cell adhesion and p53/TP53-dependent induction of apoptosis. Does not bind RNA. As component of the WAVE1 complex, required for BDNF-NTRK2 endocytic trafficking and signaling from early endosomes (By similarity).
Cellular Location	Cytoplasm. Nucleus Cytoplasm, perinuclear region {ECO:0000250   UniProtKB:Q5SQX6}. Synapse, synaptosome {ECO:0000250   UniProtKB:Q5SQX6}. Note=Highly expressed in the perinuclear region and enriched in synaptosomes (By similarity) Treatment with leptomycin-B triggers translocation to the nucleus (PubMed:17245118). {ECO:0000250   UniProtKB:Q5SQX6, ECO:0000269   PubMed:17245118}
Tissue Location	Expressed in T-cells. Increased expression is observed in CD4(+) T-lymphocytes from patients with multiple sclerosis (at protein level).

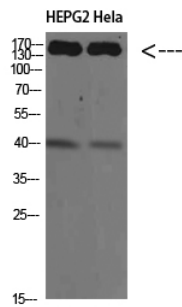
## Background

Involved in T-cell adhesion and p53/TP53-dependent induction of apoptosis. Does not bind RNA. As

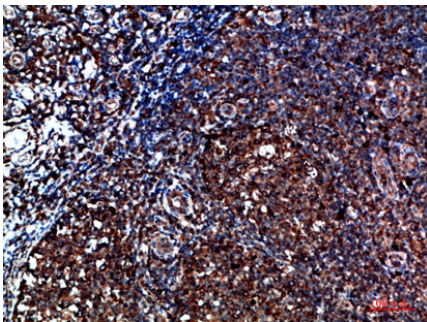
component of the WAVE1 complex, required for BDNF-NTRK2 endocytic trafficking and signaling from early endosomes (By similarity).

## Images

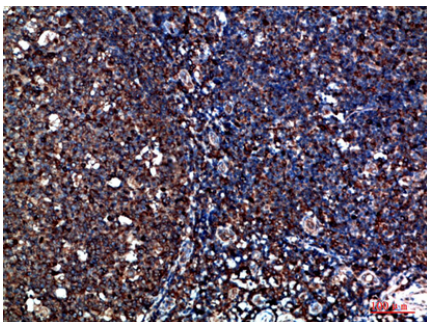
---



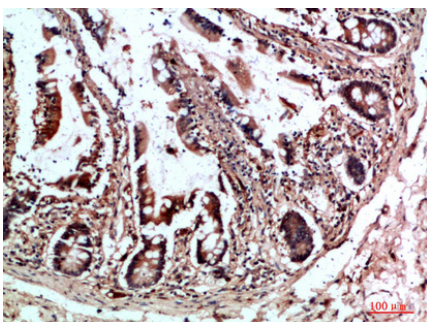
Western Blot analysis of HEPG2 HeLa cells using CYFIP2 Polyclonal Antibody diluted at 1:500. Secondary antibody was diluted at 1:20000



Immunohistochemical analysis of paraffin-embedded human-tonsil, antibody was diluted at 1:200

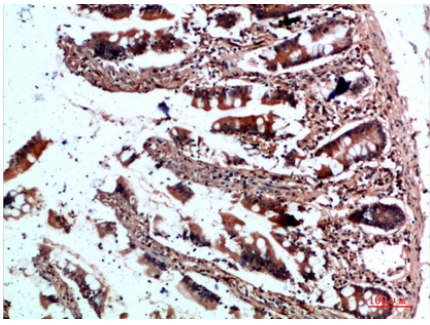


Immunohistochemical analysis of paraffin-embedded human-tonsil, antibody was diluted at 1:200



Immunohistochemical analysis of paraffin-embedded human-colon, antibody was diluted at 1:200

Immunohistochemical analysis of paraffin-embedded human-colon, antibody was diluted at 1:200



Please note: All products are 'FOR RESEARCH USE ONLY. NOT FOR USE IN DIAGNOSTIC OR THERAPEUTIC PROCEDURES'.