

Nanos Homologue 1 (NANOS1) Polyclonal Antibody

Catalog # AP73971

Product Information

Application	WB
Primary Accession	Q8WY41
Reactivity	Human
Host	Rabbit
Clonality	Polyclonal
Calculated MW	30230

Additional Information

Gene ID	340719
Other Names	Nanos homolog 1 (NOS-1) (EC_Rep1a)
Dilution	WB~~WB 1:500-2000, ELISA 1:10000-20000
Format	Liquid in PBS containing 50% glycerol, 0.5% BSA and 0.09% (W/V) sodium azide.
Storage Conditions	-20°C

Protein Information

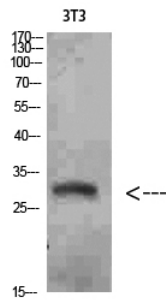
Name	NANOS1
Synonyms	NOS1
Function	May act as a translational repressor which regulates translation of specific mRNAs by forming a complex with PUM2 that associates with the 3'-UTR of mRNA targets. Capable of interfering with the proadhesive and anti-invasive functions of E-cadherin. Up-regulates the production of MMP14 to promote tumor cell invasion.
Cellular Location	Cytoplasm, perinuclear region. Cytoplasm Note=Colocalizes with SNAPIN and PUM2 in the perinuclear region of germ cells.
Tissue Location	Testis and ovary (at protein level). Predominantly expressed in testis. Specifically expressed during germline development. In adult tissues, it is mainly expressed in spermatogonia, the stem cells of the germline. Also expressed during meiosis in spermatocytes. Not present in late, post-meiotic stage germ cells Expressed in fetal ovaries, while it is weakly or not expressed in mature postmeiotic oocytes, suggesting that it may be expressed in premeiotic female germ cells. Expressed at high levels only in the E- cadherin deficient cell lines. Highly expressed in lung carcinomas and mostly detected

in invasive tumor cells and its expression correlates with tumor aggressiveness.

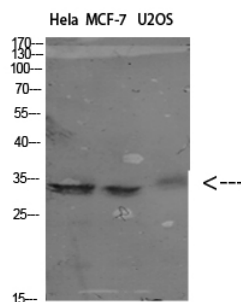
Background

May act as a translational repressor which regulates translation of specific mRNAs by forming a complex with PUM2 that associates with the 3'-UTR of mRNA targets. Capable of interfering with the proadhesive and anti-invasive functions of E-cadherin. Up-regulates the production of MMP14 to promote tumor cell invasion.

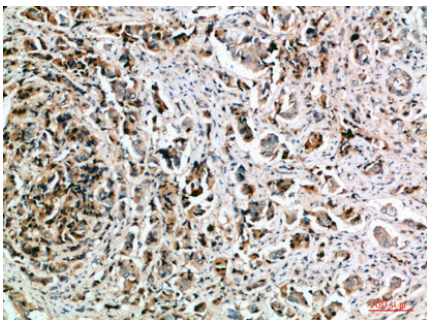
Images



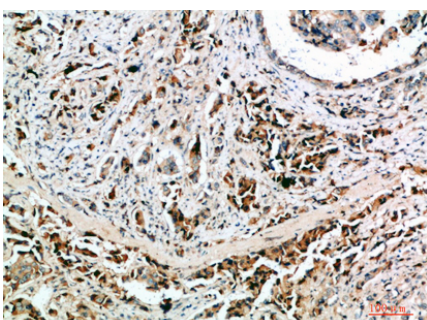
Western Blot analysis of 3T3 cells using Nanos Homologue 1 (NANOS1) Polyclonal Antibody diluted at 1:1500. Secondary antibody was diluted at 1:20000



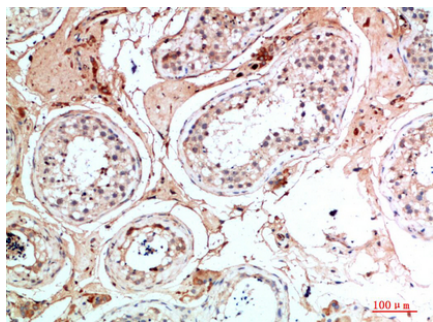
Western Blot analysis of various cells using Antibody diluted at 1:1000. Secondary antibody was diluted at 1:20000



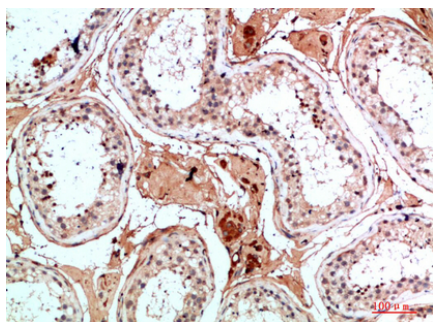
Immunohistochemical analysis of paraffin-embedded human-breast-cancer, antibody was diluted at 1:200



Immunohistochemical analysis of paraffin-embedded human-breast-cancer, antibody was diluted at 1:200



Immunohistochemical analysis of paraffin-embedded human-testis, antibody was diluted at 1:200



Immunohistochemical analysis of paraffin-embedded human-testis, antibody was diluted at 1:200

Please note: All products are 'FOR RESEARCH USE ONLY. NOT FOR USE IN DIAGNOSTIC OR THERAPEUTIC PROCEDURES'.