

RBM3 Antibody (C-term)

Purified Rabbit Polyclonal Antibody (Pab)

Catalog # AP7397b

Product Information

Application	WB, IHC-P, FC, E
Primary Accession	P98179
Other Accession	Q925G0 , O89086
Reactivity	Human, Mouse
Predicted	Rat
Host	Rabbit
Clonality	Polyclonal
Isotype	Rabbit IgG
Clone Names	RB18777
Calculated MW	17170
Antigen Region	128-157

Additional Information

Gene ID	5935
Other Names	Putative RNA-binding protein 3, RNA-binding motif protein 3, RNPL, RBM3, RNPL
Target/Specificity	This RBM3 antibody is generated from rabbits immunized with a KLH conjugated synthetic peptide between 128-157 amino acids from the C-terminal region of human RBM3.
Dilution	WB~~1:1000 IHC-P~~1:100~500 FC~~1:10~50 E~~Use at an assay dependent concentration.
Format	Purified polyclonal antibody supplied in PBS with 0.09% (W/V) sodium azide. This antibody is prepared by Saturated Ammonium Sulfate (SAS) precipitation followed by dialysis against PBS.
Storage	Maintain refrigerated at 2-8°C for up to 2 weeks. For long term storage store at -20°C in small aliquots to prevent freeze-thaw cycles.
Precautions	RBM3 Antibody (C-term) is for research use only and not for use in diagnostic or therapeutic procedures.

Protein Information

Name	RBM3
Synonyms	RNPL

Function	Cold-inducible mRNA binding protein that enhances global protein synthesis at both physiological and mild hypothermic temperatures. Reduces the relative abundance of microRNAs, when overexpressed. Enhances phosphorylation of translation initiation factors and active polysome formation (By similarity).
Cellular Location	Nucleus. Cytoplasm. Cell projection, dendrite. Note=Localizes in mRNA granules in dendrites.

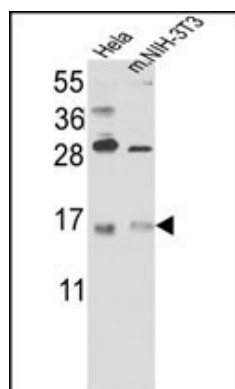
Background

RBM3 is a member of the glycine-rich RNA-binding protein family and a protein with one RNA recognition motif (RRM) domain. Expression of this protein is induced by cold shock and low oxygen tension.

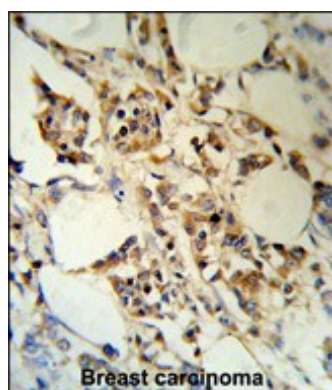
References

Zeng,Y., J. Cell. Biochem. 107 (1), 179-188 (2009)
 Sureban,S.M., Oncogene 27 (33), 4544-4556 (2008)

Images

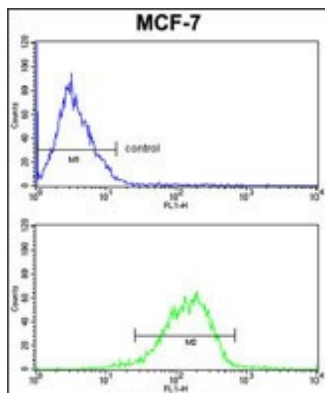


Western blot analysis of RBM3 Antibody (C-term) (Cat. 3AP7397b) in HeLa cell line lysates and mouse NIH-3T3 tissues lysates (35ug/lane). RBM3 (arrow) was detected using the purified Pab.



RBM3 Antibody (C-term) (RB18777) IHC analysis in formalin fixed and paraffin embedded human breast carcinoma followed by peroxidase conjugation of the secondary antibody and DAB staining. This data demonstrates the use of the RBM3 Antibody (C-term) for immunohistochemistry. Clinical relevance has not been evaluated.

RBM3 Antibody (C-term) (Cat.#AP7397b) FC analysis of MCF-7 cells (bottom histogram) compared to a negative control cell (top histogram). FITC-conjugated goat-anti-rabbit secondary antibodies were used for the analysis.



Please note: All products are 'FOR RESEARCH USE ONLY. NOT FOR USE IN DIAGNOSTIC OR THERAPEUTIC PROCEDURES'.