

# Plasminogen receptor Polyclonal Antibody

Catalog # AP73984

## Product Information

---

Application	WB
Primary Accession	<a href="#">Q9HBL7</a>
Reactivity	Human, Rat
Host	Rabbit
Clonality	Polyclonal
Calculated MW	17201

## Additional Information

---

Gene ID	55848
Other Names	Plasminogen receptor (KT) (Plg-R(KT))
Dilution	WB~~WB 1:500-2000, ELISA 1:10000-20000
Format	Liquid in PBS containing 50% glycerol, 0.5% BSA and 0.09% (W/V) sodium azide.
Storage Conditions	-20°C

## Protein Information

---

Name	PLGRKT
Synonyms	C9orf46
Function	Receptor for plasminogen. Regulates urokinase plasminogen activator-dependent and stimulates tissue-type plasminogen activator-dependent cell surface plasminogen activation. Proposed to be part of a local catecholaminergic cell plasminogen activation system that regulates neuroendocrine prohormone processing. Involved in regulation of inflammatory response; regulates monocyte chemotactic migration and matrix metalloproteinase activation, such as of MMP2 and MMP9.
Cellular Location	Cell membrane; Multi-pass membrane protein Note=Colocalizes on the cell surface with urokinase plasminogen activator surface receptor/PLAUR.
Tissue Location	Expressed in peripheral blood cells and monocytes. Expressed in adrenal medulla.

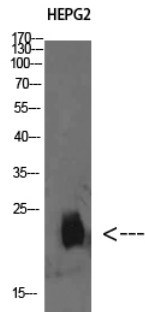
## Background

---

Receptor for plasminogen. Regulates urokinase plasminogen activator-dependent and stimulates tissue-type plasminogen activator-dependent cell surface plasminogen activation. Proposed to be part of a local catecholaminergic cell plasminogen activation system that regulates neuroendocrine prohormone processing. Involved in regulation of inflammatory response; regulates monocyte chemotactic migration and matrix metalloproteinase activation, such as of MMP2 and MMP9.

## Images

---



Western Blot analysis of HEPG2 cells using Plasminogen receptor Polyclonal Antibody diluted at 1:500. Secondary antibody was diluted at 1:20000

Please note: All products are 'FOR RESEARCH USE ONLY. NOT FOR USE IN DIAGNOSTIC OR THERAPEUTIC PROCEDURES'.