

RCC1 Polyclonal Antibody

Catalog # AP73997

Product Information

Application	WB, IHC-P, IF, ICC, E
Primary Accession	P18754
Reactivity	Human, Mouse, Rat
Host	Rabbit
Clonality	Polyclonal
Calculated MW	44969

Additional Information

Gene ID	1104
Other Names	RCC1 CHC1
Dilution	WB~~WB 1:500-2000, ELISA 1:10000-20000 IHC-P~~WB 1:500-2000, ELISA 1:10000-20000 IF~~1:50~200 ICC~~N/A E~~N/A
Format	Liquid in PBS containing 50% glycerol, 0.5% BSA and 0.09% (W/V) sodium azide.
Storage Conditions	-20°C

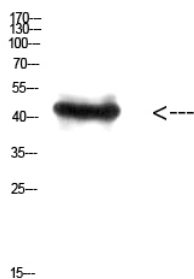
Protein Information

Name	RCC1
Synonyms	CHC1
Function	Guanine-nucleotide releasing factor that promotes the exchange of Ran-bound GDP by GTP, and thereby plays an important role in RAN-mediated functions in nuclear import and mitosis (PubMed: 11336674 , PubMed: 17435751 , PubMed: 1944575 , PubMed: 20668449 , PubMed: 22215983 , PubMed: 29042532). Contributes to the generation of high levels of chromosome-associated, GTP-bound RAN, which is important for mitotic spindle assembly and normal progress through mitosis (PubMed: 12194828 , PubMed: 17435751 , PubMed: 22215983). Via its role in maintaining high levels of GTP-bound RAN in the nucleus, contributes to the release of cargo proteins from importins after nuclear import (PubMed: 22215983). Involved in the regulation of onset of chromosome condensation in the S phase (PubMed: 3678831). Binds both to the nucleosomes and double-stranded DNA (PubMed: 17435751 , PubMed: 18762580).
Cellular Location	Nucleus. Chromosome. Cytoplasm Note=Predominantly nuclear in interphase cells (PubMed:12194828). Binds to mitotic chromosomes (PubMed:12194828,

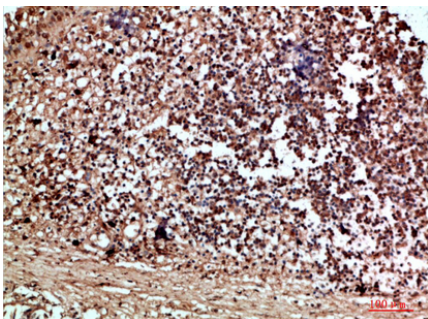
Background

Guanine-nucleotide releasing factor that promotes the exchange of Ran-bound GDP by GTP, and thereby plays an important role in RAN-mediated functions in nuclear import and mitosis (PubMed:[1944575](#), PubMed:[17435751](#), PubMed:[20668449](#), PubMed:[22215983](#), PubMed:[11336674](#)). Contributes to the generation of high levels of chromosome-associated, GTP-bound RAN, which is important for mitotic spindle assembly and normal progress through mitosis (PubMed:[12194828](#), PubMed:[17435751](#), PubMed:[22215983](#)). Via its role in maintaining high levels of GTP-bound RAN in the nucleus, contributes to the release of cargo proteins from importins after nuclear import (PubMed:[22215983](#)). Involved in the regulation of onset of chromosome condensation in the S phase (PubMed:[3678831](#)). Binds both to the nucleosomes and double-stranded DNA (PubMed:[17435751](#), PubMed:[18762580](#)).

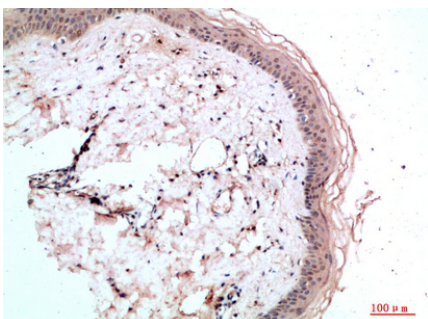
Images



Western Blot analysis of HEPG2 cells using Antibody diluted at 800. Secondary antibody was diluted at 1:20000



Immunohistochemical analysis of paraffin-embedded human-thyroid, antibody was diluted at 1:200



Immunohistochemical analysis of paraffin-embedded human-skin, antibody was diluted at 1:200

Please note: All products are 'FOR RESEARCH USE ONLY. NOT FOR USE IN DIAGNOSTIC OR THERAPEUTIC PROCEDURES'.