

# MBL-C Polyclonal Antibody

Catalog # AP74003

## Product Information

---

<b>Application</b>	WB
<b>Primary Accession</b>	<a href="#">P11226</a>
<b>Reactivity</b>	Human, Mouse
<b>Host</b>	Rabbit
<b>Clonality</b>	Polyclonal
<b>Calculated MW</b>	26144

## Additional Information

---

<b>Gene ID</b>	4153
<b>Other Names</b>	MBL2 COLEC1 MBL
<b>Dilution</b>	WB--WB 1:500-2000, ELISA 1:10000-20000
<b>Format</b>	Liquid in PBS containing 50% glycerol, 0.5% BSA and 0.09% (W/V) sodium azide.
<b>Storage Conditions</b>	-20°C

## Protein Information

---

<b>Name</b>	MBL2 ( <a href="#">HGNC:6922</a> )
<b>Synonyms</b>	COLEC1, MBL
<b>Function</b>	Calcium-dependent lectin involved in innate immune defense (PubMed: <a href="#">35102342</a> ). Binds mannose, fucose and N-acetylglucosamine on different microorganisms and activates the lectin complement pathway. Binds to late apoptotic cells, as well as to apoptotic blebs and to necrotic cells, but not to early apoptotic cells, facilitating their uptake by macrophages. May bind DNA. Upon SARS coronavirus-2/SARS-CoV-2 infection, activates the complement lectin pathway which leads to the inhibition SARS-CoV-2 infection and a reduction of the induced inflammatory response (PubMed: <a href="#">35102342</a> ).
<b>Cellular Location</b>	Secreted.
<b>Tissue Location</b>	Plasma protein produced mainly in the liver.

## Background

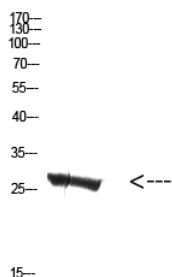
---

Calcium-dependent lectin involved in innate immune defense. Binds mannose, fucose and

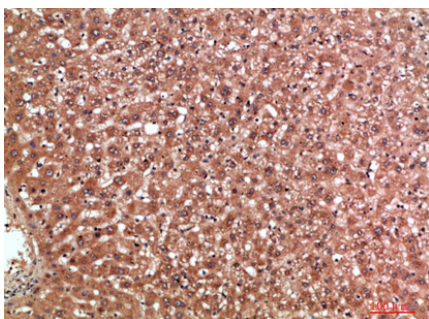
N-acetylglucosamine on different microorganisms and activates the lectin complement pathway. Binds to late apoptotic cells, as well as to apoptotic blebs and to necrotic cells, but not to early apoptotic cells, facilitating their uptake by macrophages. May bind DNA.

## Images

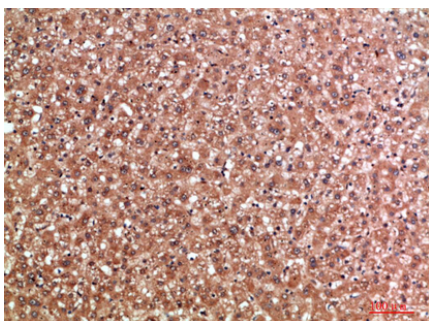
---



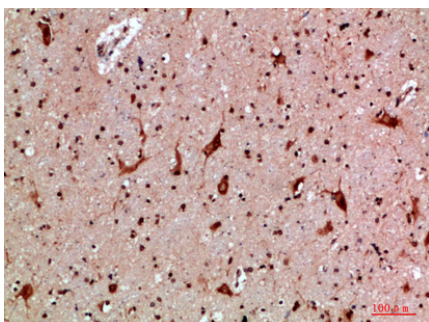
Western Blot analysis of mouse-kidney cells using Antibody diluted at 500. Secondary antibody was diluted at 1:20000



Immunohistochemical analysis of paraffin-embedded human-liver, antibody was diluted at 1:200

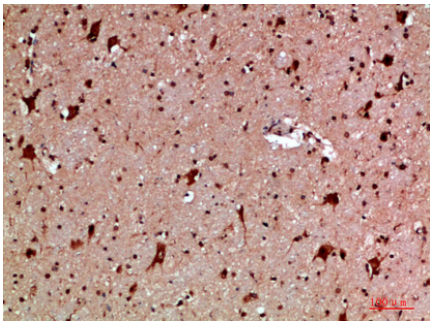


Immunohistochemical analysis of paraffin-embedded human-liver, antibody was diluted at 1:200



Immunohistochemical analysis of paraffin-embedded human-brain, antibody was diluted at 1:200

Immunohistochemical analysis of paraffin-embedded human-brain, antibody was diluted at 1:200



Please note: All products are 'FOR RESEARCH USE ONLY. NOT FOR USE IN DIAGNOSTIC OR THERAPEUTIC PROCEDURES'.