

CSH1 Polyclonal Antibody

Catalog # AP74004

Product Information

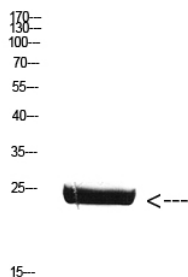
Application	WB, IHC-P, IF, ICC, E
Primary Accession	P01243
Reactivity	Human, Rat, Mouse
Host	Rabbit
Clonality	Polyclonal

Additional Information

Other Names	CSH1; CSH2
Dilution	WB~~IHC-p: 100-300.WB 1:500-2000, ELISA 1:10000-20000 IHC-P~~N/A IF~~1:50~200 ICC~~N/A E~~N/A
Format	Liquid in PBS containing 50% glycerol, 0.5% BSA and 0.09% (W/V) sodium azide.
Storage Conditions	-20°C

Protein Information

Images



Western Blot analysis of mouse-brain cells using Antibody diluted at 800. Secondary antibody was diluted at 1:20000

Please note: All products are 'FOR RESEARCH USE ONLY. NOT FOR USE IN DIAGNOSTIC OR THERAPEUTIC PROCEDURES'.